

ST 18  
Books  
of the  
late, net  
technique  
omotion.  
center  
recent  
SA, the  
of the  
develop  
agenda.

WEATHER			
	Min.	Max.	Tec.
Wednesday, Aug. 17	59	87	0.00
Thursday, Aug. 18	65	86	0.00
Friday, Aug. 19	74	86	0.00
Saturday, Aug. 20	82	88	0.40
Sunday, Aug. 21	85	77	0.00
Monday, Aug. 22	82	89	Trace
Tuesday, Aug. 23	80	85	Trace

# The Chelsea Standard

**QUOTE**  
The man who trusts men will  
make fewer mistakes than he  
who distrusts them.  
—Camillo Benso Cavour

SEVENTIETH YEAR—No. 8      12 Pages This Week      CHELSEA, MICHIGAN, THURSDAY, AUGUST 25, 1960      16c per Copy      SUBSCRIPTION \$3.00 PER YEAR



**FAIRGROUNDS FENCE**—Reuben Lesser, Jr., (left), operated the post hole digger when Chelsea Community Fair board members and other volunteers began erection of an arena fence at the fairgrounds in preparation for the opening of the fair on Sept. 6. Thomas Bust, Community Fair association president, behind the tractor, and Stephen Hayden to the right of the digger, were among the group who helped. Others in the photo include Elmer Lindow and Don Keizer (at extreme right). Approximately 85 post holes were dug in less than three hours and the men coated the ends of the posts with creosote and set them in place. Workers went out at intervals during the week to finish tamping the soil around the posts and last night another "work bee" was held to put up the board fence.

## Grid Practice Will Start Next Monday

Football practice for Chelsea High school players begins Monday, Aug. 29, at 8 p.m.

Prior to this first practice, all players are required to have had a physical examination and also pay their insurance for the season. Fee for the insurance this year, to be paid by the players is \$6.75 each.

Physical examinations will be given free of charge at the high school tomorrow (Friday) beginning at 1 p.m.

Chelsea physicians are donating their services for the examinations held at the school; however, if players prefer to go to their own physician's office for the examination they will pay any charges themselves.

Equipment is to be issued at 9 a.m. Saturday, Aug. 27, to all previous letter winners and to other seniors and juniors who will be on the squad this year.

Sophomores and freshmen will be issued equipment at 10:30 a.m. In order to receive their equipment, they must have the money for their insurance and proof of physical examination.

High School Athletic Association rules require three weeks of practice before the first game of the season.

Chelsea plays its first game this fall against Milan. It will be a home game on Friday, Sept. 16 and to be eligible to play that game all players should be present when practice begins Monday, Coach Alan Conklin pointed out.



**BOYS' SCHOOL**—This architect's drawing shows the proposed new school for retarded boys to be constructed on the former Van Valkenburg farm west of Chelsea. Groundbreaking ceremonies will be held at 3 p.m. Sunday with all people of the community invited to attend. Construction and operation of the \$600,000 school is sponsored by the Catholic Archdiocese of Detroit.

## Make Your Fair Parade Entry Now

George Atkinson, Community Fair parade chairman, is requesting prospective parade entrants to get in as soon as possible. He asks that prospective entrants call his home, 9-6851, giving their name and address, so they can enter in the parade.

Atkinson said it is important for him to know as soon as possible as to what type of entries are planned in order that he can plan the parade accordingly. Organizations, industries or any groups planning floats will contact him at their earliest convenience.

Three prizes are again being offered for floats—\$20, \$15 and \$10 for first, second and third prizes, respectively.

Three cash prizes are also to be awarded for the best decorated parade float, bicycle, or car. Prizes in each of two categories are \$3, \$2 and \$1, respectively, for first, second and third prizes.

Atkinson said he would like to see the old-time cars included in the parade and asks that owners of such cars let him know their plans in time.

The big Community Fair parade will be held at 2 p.m., Saturday, Sept. 10.

The Community Fair Queen, to be crowned Wednesday, Sept. 7, at the evening of the fair, will appear in the parade, riding in a convertible.

## Fall Schedule at McKune Library Effective Sept. 1

The fall schedule of hours will go into effect at McKune Memorial Library beginning Sept. 1.

Mondays, Thursdays and Saturdays, the library will be open from 11:30 a.m. until 5 p.m.; Tuesdays, Wednesdays and Fridays, from 2 p.m. until 5 p.m.; and Monday, Wednesday and Friday evenings from 7 p.m. until 9 p.m.

A report of the children's summer reading program at the library states that 141 children participated, reading a total of 1,472 books.

Five or more books were read by 81 of the children and they will be presented with certificates at school this fall.

Volunteers who assisted at the library during the six-week reading program are Mrs. Robert Daniels, Mrs. Thomas Masterson, Mrs. Ole Johnson, Mrs. David Souler, The Rev. Philip Rusten, Mrs. F. J. Wagner, Mrs. E. W. Eaton and Joanne Wojciehowski.

A total of 215 children attended the five-story hours on Wednesday afternoons, with Mrs. Wilbur Hinderer as the "story lady."

## New Grade Pupils Should Register Now

Elementary School Principal Arthur Schmunk made several announcements this week pertaining to the coming school year which opens Tuesday, Sept. 6.

Children entering the Chelsea elementary schools for the first time are required to enroll before the opening day, Sept. 6. New students registering Sept. 6 must register in the South Elementary school office and will be placed in classrooms as soon as possible after that date, possibly between Wednesday and Friday of that week. Children may be registered by phone or in person any week day except Saturday, prior to Sept. 2.

The charge of five dollars per student which is being made this year is intended to cover depreciation of textbooks in the later elementary rooms plus such workbooks and other consumable material such as used in art classes in addition to textbooks. If older pupils bring their rental money, they should go directly to their classroom so as to avoid losing the money on the playground. These payments should be made directly to the teacher on Sept. 6.

Kindergarten children living in the north from the following roads should report at the North school for placement. The roads from east to west are: North Lima Center Rd., to Island Lake Rd. and Waterloo Rd. to Roe Rd.

Parents are expected to pick up kindergarten children at noon during the first week of school, or until bus schedules are set up. It is planned that milk will be available for rural children starting the first day of school. The charge will be approximately 60 cents for four weeks and the amount is paid directly to the classroom teacher.

Guests of Mrs. Delphine Erickson on the past week were Miss Diane Erickson and Wilbert Lindwall who were married in Ann Arbor last Saturday.

## Fat Stock Sale at Fair Set Thursday

The annual fat stock sale at the Chelsea Community Fair is to be held at 7 p.m. Thursday, Sept. 8. There are more than 40 steers and several pens of fat hogs and lambs that will be offered for sale at auction.

The sale affords businessmen and others in the community an opportunity to show the young owners of the stock that their efforts at raising fine quality stock are appreciated. Bidders customarily pay premium prices for the high grade animals sold at the fair.

A dairy showmanship contest is to be a new feature at the fair. It will be held Thursday evening immediately after the fat stock sale.

Similar contests at 4-H shows have always proved to be an important and crowd-pleasing event.

Each entrant in the contest leads his or her dairy animal into the arena and goes through an exacting examination by an experienced judge. The young people spend many hours working and practicing for these showmanship contests.

As a humorous sideline, some of the old-time farmers in the area who sometimes may have been critical of their sons in past showmanship contests, will be in the arena with animals of their own, matching their abilities with the younger generation.

## K-C Chicken Barbecue Set For Sunday

Barbecue pits will be set up on St. Mary's school playground for Sunday's Knights of Columbus chicken barbecue. Henry Orthberg, experienced in barbecue procedure, will be in charge of charcoal broiling the chicken halves.

General chairman of the project is Thomas McClure.

A "drive-in" take-out stand will be in operation on the Summit St. side of the playground and motorists will not need to leave their cars to pick up dinners there.

Tables will be set up on the school grounds for those who wish to eat their dinner there. In case of rain, the tables will be put up in the school hall.

Serving will be in progress from 12 o'clock noon until 5 p.m.

## Mrs. William Scott Seriously Injured In Auto Crash

Mrs. William A. Scott, daughter-in-law of Mr. and Mrs. Walter Scott of Cedar Lake, is hospitalized at Bowling Green, O. She suffered a fractured pelvis and severe cuts on her head and face in a traffic accident Sunday as she and her husband were enroute home from a vacation trip. Her husband received only minor injuries, members of his family said yesterday.

The accident occurred at an intersection of US-26 south of Perryburg, O., a town near Bowling Green. Cars driven by Scott and George B. Higgins, 86, of Perryburg, collided. The Perryburg driver was killed.

## Groundbreaking Ceremony Set for Sunday Afternoon

The Catholic Archdiocese of Detroit has announced that construction of a \$600,000 school for mentally retarded boys, to be known as the St. Louis School for Exceptional Boys, is to begin at once on its Sylvan township property acquired two years ago.

Groundbreaking ceremonies are scheduled for 3 o'clock Sunday afternoon with the Rt. Rev. Msgr. Thomas P. Benhart of Farmington turning the first spadeful of earth. The site of the school is the 188-acre former Franklin Van Valkenburg farm on Old US-12, seven miles southwest of Chelsea. Fertile fields and wooded areas of the farm provide an ideal location for the school which is the second of its kind to be constructed under Archdiocesan sponsorship.

Present plans call for construction of the home-school structure to be completed within a year. The school is initially designed to house and educate 75 boys from ages 8 to 15.

The plant, designed by Joseph Cyr, Architect and Associates of Livonia, is composed of two dormitories, eight classrooms, shops and speech therapy rooms as well as gymnasium and playrooms, chapel, dining facilities, administration and staff quarters. Provisions are also made for future construction of eight student cottages.

The Rev. Fr. Joseph Legnani and Faust Sarperi, both of Como, Italy, will be director and vice-director of the new institution. The two men are affiliated with the order of the Servants of Charity.

According to Fr. Legnani, four priests and one brother and an undetermined number of lay teachers and staff members will initially conduct the school.

Fr. Legnani estimates that the anticipated enrollment will probably climb to nearly 200 within a five-year period.

Stationed in the United States for only one year, the two priests have expressed a desire to make the home more than just a sanctuary for the retarded. "We want to make St. Louis an answer to the challenging need of retarded children. It will be a sympathetic approach rather than the ignoring of them so often given these youngsters," they stated.

Erected by funds from the annual Archdiocese of Detroit Development Fund, (ADDF) the school will be a contemporary product of basic research in education of the retarded child.

It will be constructed of beige-tone brick and decorated with original sculptural fascias conceived (Continued on page 3)

## Manchester Youth Lists in U.S. Navy

Richard Harold Mingus of 232 E. Main St., Manchester, entered Aug. 17 in the U. S. Navy and is now undergoing recruit training at the Naval Training Station at San Diego, Calif.

## Two Bikes To Be Given Away at Fair

Wallace Wood, Chelsea Community Fair secretary, has announced that Chelsea merchants have tickets available for the bicycle drawing to be held at the fairgrounds, Saturday, Sept. 10, at 5 p.m.

Two bicycles will be given away, one to a boy and another to a girl. The winners must be present at the drawing to receive their bicycles.

Children wishing to enter their names may get tickets from any Chelsea area merchant.

Tickets must be deposited at the fairgrounds on the day of the drawing.

## Two Bikes To Be Given Away at Fair

Wallace Wood, Chelsea Community Fair secretary, has announced that Chelsea merchants have tickets available for the bicycle drawing to be held at the fairgrounds, Saturday, Sept. 10, at 5 p.m.

Two bicycles will be given away, one to a boy and another to a girl. The winners must be present at the drawing to receive their bicycles.

Children wishing to enter their names may get tickets from any Chelsea area merchant.

Tickets must be deposited at the fairgrounds on the day of the drawing.

## Fair Board Streamlines Night Shows

Reports of Monday night's Community Fair Board meeting revealed that several changes are being planned for this year's fair. Everyone present appeared to be interested in streamlining the entire program to make it as enjoyable as possible for the public.

Several new additions are to be made to the nightly programs and many of the time-consuming events are being reorganized to assure that each evening's program will be concluded by 9:30 p.m.

The report of the meeting indicated that enthusiasm was displayed by everyone connected with the fair, appearances seeming to show that they are endeavoring to make Chelsea's annual event one of the best and biggest fair attractions in this part of the state.

Fair Association President Thomas Bust mentioned at the meeting that a 1,200 pound steer had been purchased to be given away at the Saturday night program at the fair. It was pointed out that the steer will go to four people this year, each to receive a quarter.

Other announcements made at the meeting included the following: Livestock exhibitors wishing to feed animals or people working at the fair will be issued special passes allowing free entrance at the gate. However, all other adults and children over 12 years of age will be charged the nominal entrance fee.

Anyone wishing season tickets may buy them for \$1.50. These tickets admit a car and one occupant at anytime during the four-day fair activities.

The annual tractor pull contest of the fair program is scheduled for 8 p.m. Friday, Sept. 9. All participants must weigh their tractors by 6 p.m. at Blauw Elevator Co. or at Chelsea Lumber Co., according to contest rules.

The annual horse show is to be held at 3 p.m. Saturday, Sept. 10. Committee members believe that everyone will enjoy the rodeo type program planned, such as speed racing, bending, barrel and other events.

The horse show follows the big Saturday afternoon parade which begins at 2 o'clock.

## Fair Board Streamlines Night Shows

Reports of Monday night's Community Fair Board meeting revealed that several changes are being planned for this year's fair. Everyone present appeared to be interested in streamlining the entire program to make it as enjoyable as possible for the public.

Several new additions are to be made to the nightly programs and many of the time-consuming events are being reorganized to assure that each evening's program will be concluded by 9:30 p.m.

The report of the meeting indicated that enthusiasm was displayed by everyone connected with the fair, appearances seeming to show that they are endeavoring to make Chelsea's annual event one of the best and biggest fair attractions in this part of the state.

Fair Association President Thomas Bust mentioned at the meeting that a 1,200 pound steer had been purchased to be given away at the Saturday night program at the fair. It was pointed out that the steer will go to four people this year, each to receive a quarter.

Other announcements made at the meeting included the following: Livestock exhibitors wishing to feed animals or people working at the fair will be issued special passes allowing free entrance at the gate. However, all other adults and children over 12 years of age will be charged the nominal entrance fee.

Anyone wishing season tickets may buy them for \$1.50. These tickets admit a car and one occupant at anytime during the four-day fair activities.

The annual tractor pull contest of the fair program is scheduled for 8 p.m. Friday, Sept. 9. All participants must weigh their tractors by 6 p.m. at Blauw Elevator Co. or at Chelsea Lumber Co., according to contest rules.

The annual horse show is to be held at 3 p.m. Saturday, Sept. 10. Committee members believe that everyone will enjoy the rodeo type program planned, such as speed racing, bending, barrel and other events.

The horse show follows the big Saturday afternoon parade which begins at 2 o'clock.

## Community Chest Board Plans Drive

Community Chest Campaign chairman Jack Weintz outlined his ideas for the fall campaign for funds at a regular meeting of the board of directors held Wednesday evening in the Village Council room of the Municipal Building. He also asked for and received suggestions from the board members present.

Chelsea campaign dates have not been announced but are expected to coincide with United Fund appeals throughout the country.

Donald Baldwin, budget chairman, alerted his committee to planned meetings of the committee to be held at intervals prior to the next regular board meeting on Sept. 21.

A vacancy on the board of directors is expected to be filled at the next meeting. The vacancy is the result of the resignation of Mrs. Fred Schumm.

## Jaycees Reported Victors In Friday's Donkeyball Game

Chelsea Jaycees were the victors in Friday's donkeyball game, winning from the Chelsea All-Stars by the close score of 2-1.

The Jaycees scored one run in each of the first two innings. The All-Stars scored in the first inning and then went scoreless for the remainder of the game.

Approximately 350 spectators were present to witness the hard riding contest.

Reports of the game state that several players were sore and stiff the next day as the result of the unaccustomed exercise.

The Jaycees went on record with a vote of appreciation for all who took part in the game as well as the Chelsea School Band and the new band director, David Lindsay.

The band entertained before the game and between the innings.

Members other than Jaycees who participated in the donkey ball game are Henry Fletcher, Richard Rodgers, Roger Davis, Edward Schuller, Duane Walz, Dick Keizer, Dick Pouty, Wayne Penix, Truman O'Doherty, Don Hable.

The list continues with Dan Ewald, Tom Dault, Silas Hopkins, Tom Franklin and Don, LaVerne and Verry Hayley.



**WELL-DRESSED ATHLETES**—Among the Jaycees and others who wore "appropriate" costumes for the donkey baseball game at the Chelsea High school athletic field Friday night were the players shown in the above photo. Standing from left are LaVerne Habley, Ron Eder, Blaine Lyle, Leonard Thiel, Dan Maroney, Cal Summers, Elton Guenther and Dan Ewald. Kneeling from left are George Winchester, Don Houle, Ralph Erlich, Marie Leach and Truman O'Doherty.

## Fair Premium List Published This Week

The premium list for the 1960 Chelsea Community Fair appears in this issue of The Standard.



**MYSTERY FARM NO. 113**—If you recognize the farm shown in the above photograph, please call The Standard office at once, GR 5-3581. It is the 113th in the series of farm photos being published each week for readers to identify if they can. The owner is entitled to a mounted photo of the farm, free of charge, if he will call at The Standard office on or before Saturday.



A Sunday dinner guest of Mrs. Anna Reichert was Mrs. Ethel Hashley of Dexter. In the afternoon Mrs. Reichert and Adolph Seltz accompanied her to Saline where they called at the home of her son-in-law and daughter, Mr. and Mrs. Donald McClain.

Telephone Your Club News  
To GR 5-3581

## Chelsea Theatre

CHELSEA, MICHIGAN

THURS.-FRI.-SAT.  
AUG. 25-26-27



**SPECIAL RUNNING TIME:**  
Complete Shows 6:30 & 9:00 p.m.  
Admission This Show Only:  
Adults: 75c Children: 35c

SUN.-MON.-TUES.  
AUG. 28-29-30



Continuous Sunday from 3:00 p.m.  
Mon.-Tues. Shows 7:00-9:10 p.m.

STARTS WED., AUG. 31

A Girl... A Story... A Picture  
to enjoy with all your heart!

WALT-DISNEY'S  
**"POLLYANNA"**  
TECHNICOLOR

## Winners Listed at County 4-H Show

Winners at the county 4-H show last week are listed as follows:  
**BEEF**—Ralph Dibble, Ann Arbor, Grand Champion; Neil Haarer, Saline, Reserve Grand Champion; Champion Steers—Ralph Dibble, Ann Arbor, Angus; Neil Haarer, Saline, Hereford; Ralph Dibble, Ann Arbor, Shorthorn.

**BEEF BREEDING**—Ralph Dibble, Ann Arbor, Angus; Neil Haarer, Saline, Hereford.

**SHEEP**—Jim Heller, Dexter, Suffolk ewe; Nick Heller, Dexter, Suffolk ram; Richard Haist, Chelsea, Corriedale ewe; Doris Hetter, Saline, Corriedale ram; Bill Tofft, Ann Arbor, Shropshire ewe; Bill Tofft, Ann Arbor, Shropshire ram; Knowlton Brown, Clinton, Hampshire ewe; Maureen Kirk, Manchester, Hampshire ram; Jerry Bristol, Chelsea, Fine Wool ewe; Neil Horning, Manchester, Fine Wool ram; Mary Sue Gordon, Saline, Rambouillet ewe; Kirk Gordon, Saline, Rambouillet ram; Rosemary Striz, Milan, individual market lamb and pen.

**WOOL FLEECES**—Doris Hetter, Saline, Medium Wool fleece; Carol Mast, Dexter, Fine Wool fleece; Gary Armbruster, Milan, Long Wool fleece.

**DAIRY**—Kathrene Gull, Saline, Holstein; John Pidd, Dexter, Jersey; Karl Graden, Ann Arbor, Ayrshire; Richard Miller, Dexter, Brown Swiss; Mark Ruhlig, Dexter, Guernsey; Dale Kapp, Ann Arbor, Red Poll.

**SWINE**—Gene Griebach, Saline, champion pen of three; Gene Griebach, Saline, champion finished market hog.

**SHOWMANSHIP**—Betty Roehm, Saline, beef; Judy Paslaski, Ypsilanti, sheep; Kathrene Gull, Saline, dairy; Albert Feidkamp, Saline, swine.

**SPECIAL AWARDS**—Judy Lindow, Chelsea, grand champion, food preservation exhibit; Shirley Morton, Saline, grand champion,

Flower Garden exhibit; Bruce Conant, Plymouth, grand champion, vegetable exhibit; RBse, Mary Payeur, Ann Arbor, grand champion, food preservation exhibit; Judy Freeman, Ann Arbor, champion showmanship for dogs; Dennis Handy, Saline, tractor operators contest.

**HORSES**—Michael Gogolin, Plymouth, colt; Martha Zeeb, Ann Arbor, ponies; Barbara Gougeon, Ann Arbor, stock horse, model class, mare; David Coon, Ann Arbor, stock horse, model class, gelding; Patrice Coon, Ann Arbor, stock horse, model class, registered Arabian; Gary Packer, Ann Arbor, stock horse, model class, western gelding; Carol Kitchenmaster, Ann Arbor, stock horse, model class, western mare; Tom Neja, Ypsilanti, stock horse, model class, mare with foal; Linda Lau, Ann Arbor, saddle horse, model class; Sandra Sexton, Ann Arbor, fitting and showing; Nichole Shetka, Ann Arbor, trail class, girls; George Wing, Ann Arbor, trail class, boys; Joun Wood, Saline, Ann Arbor, ponies; Elaine Metty, Ann Arbor, stock horse, pleasure class, girls under 16; Tom Neja, Ypsilanti, stock horse, pleasure class, girls under 16; Bob Hardy, Ypsilanti, stock horse, pleasure class, girls over 16; Bob Hardy, Ypsilanti, winner of Herb Steffen trophy; Diane DiPonio, Plymouth, stock horse, working class, girls; James Sexton, Ann Arbor, stock horse, working class, boys; Jeanne Wolff, Ann Arbor, saddle horse.

## LIMA TOWNSHIP

Gail Bakoff of Livonia is a guest this week at the home of Mr. and Mrs. Clarence Reddeman and family.  
Mrs. Edward W. Kipfmiller and children were all day Sunday guests of Mr. and Mrs. Harry Cole of Waters Rd.

Week ago Thursday until Sunday guests of Mr. and Mrs. Arthur Kuhl were Mr. and Mrs. Roger Hoopinger and daughter, Barbara, of Madison, Wis., who arrived by plane. Other guests were Mr. and Mrs. John Howe of East Lansing.

Judy Lindow won a grand champion award in baking at the Washtenaw County 4-H Show. Mr. and Mrs. Bernard Herst entertained Friday evening at a birthday party honoring the former's father, John W. Herst of Ann Arbor, and Mrs. Herst's brother-in-law, Raymond Egeler. There were 18 guests present. Prizewinners in cards were Mrs. David Schaerer and Irven Weiss, high and Mrs. Irven Weiss and Raymond Egeler, consolation.

Mrs. Anna Reichert entertained at a birthday dinner Saturday in honor of Adolph Seltz. Guests at the dinner included his daughter and family, Mr. and Mrs. Ralph Parker and daughters, Sue and Jill, of Flat Rock; also, Mrs. Ethel Hashley of Dexter.

Mrs. Irene Hayden returned Wednesday to her home in New York City after spending five days with her mother, Mrs. Anna Reichert.

SUBSCRIBE TODAY  
TO THE CHELSEA STANDARD!

## Kiwanis Club Names Delegates To Convention

Paul G. Schabbe, Jr., was in charge of the program at the Kiwanis club meeting Monday evening and introduced Floyd Fowler and Dr. J. B. Casey, who gave their autobiographies. Both became members of the club during the past few months.

Business at the meeting, held in the social center of the Methodist church, included election of delegates to the Michigan state convention to be held at Grand Rapids, Sept. 18. Named were William Rich, the club president, and Anton Nielsen and James Liebeck, first vice-president.

Alternate delegates are Henry Thierman, Chandler Rogers and Dr. J. B. Casey.

It was announced that Lowell Davison, Paul G. Schabbe, Jr., Anton Nielsen and William Colins were to attend an inter-club meeting at the Ann Arbor Eastern Kiwanis club Tuesday evening and that William Rich, James Liebeck, Leo Bishop and Paul F. Niehaus are to attend a nominating caucus at Ypsilanti tonight when a Division VI lieutenant-governor will be nominated.

## PERSONALS

Mr. and Mrs. Paul F. Niehaus, with Mr. and Mrs. Paul J. Niehaus and children, Lucy and Jeffrey of Genesee, N. Y., who are spending the summer here, and Mrs. Clara Hutzler have returned to Chelsea after a two-week stay at Loon Haven, Lake May, near Hawks.

Mrs. Mary Kniss, with her son and daughter and families, Mr. and Mrs. Robert Embury and children, of Jackson, and Mrs. Eleanor Shepard and children, have returned home after an eight-day camping outing at Wolfe Lake near Lewiston.

Standard Want Ads Get Results!

## Overize Cobbler Potato Weighing 2 1/2 Pounds

Dug by William Beach

William Beach of 10639 Chelsea-Dexter Rd., dug his crop of Irish Cobbler potatoes last week and among the 10 bushels he harvested was one which weighed two pounds and eight ounces.

The bumper crop was grown from one peck of seed planted in his garden on May 7.

The University of Michigan in 1879 became one of the first U. S. universities to undertake professional training of teachers.

Take care in handling Michigan peaches to prevent bruising. The peach you bruise today may be a throw-away tomorrow.

Save 40% on

SCHOOL SUPPLIES

Closing Out Our Entire Stock

Zipper Cases, from 89c

Ring Binders, from 19c

Clipboards 29c

98c 3- and 5-Hole Fillers 64c

\$9.50 Drafting Sets \$4.37

\$6.50 Drafting Sets \$2.99

Spiral Note Books 12c

and 100 other items at dealer's cost.

JUDSON FORMPRINT, INC.

120 W. Middle St. Chelsea, Mich.

Open next four Friday evenings until 9 p.m.

## Chelsea Golf League

Spaulding Chevrolet	49	31
Schunim's Tavern	40	34
Chelsea Products	44	36
Chelsea Drug	41	39
Poster's Men's Wear	40	40
Seltz's Tavern	38 1/2	40 1/2
Chelsea Mfr. Corp.	38 1/2	41 1/2
Chelsea Lumber	37	43
Buick Garage	36	44
Eisale & Howe Tavern	29 1/2	50 1/2

JUST A LITTLE. Accent colors can add sparkle to your living room, but don't use too much. Home economist say the fewer color accents you see, the more effective they can be. many colors in too many places detract from the overall plan of the room.

GOOD HOUSEKEEPING

GUARANTEES

performance of the S&H Green Stamp Plan

Now, GOOD HOUSEKEEPING has added its seal of approval to that of more than 35 million American families—including many thousands here in Michigan—who save S&H Green Stamps.

Michigan housewives enthusiastically approve S&H Green Stamps because they get something extra in quality merchandise without paying a penny more for what they buy.

Pick up a free copy of the beautiful S&H Green Stamp Idsbook—greatest ever published—at any store or service station that gives S&H Green Stamps and see the famous brand-name products now available to you at no added cost.

Since 1898... America's Only Nation-wide Stamp Plan

MICHIGAN DIVISION

7601 Second Avenue • Detroit, Michigan

## SCIO DRIVE-IN THEATRE

6588 Jackson Road, Ann Arbor—Phone Normandy 8-7083

FRIDAY and SATURDAY AUG. 26-27

"LAST DAYS OF POMPEII" "HOUND OF THE BASKERVILLES"

In Cinemascope and Color With Steve Reeves and Barbara Carroll. With Peter Cushing and Christopher Lee.

ALSO: CARTOON

SUN.-MON.-TUES. AUG. 28-29-30

"POLLYANNA" "BLOOD & STEEL"

In Color With Jane Wyman and Richard Egan. With John Lupton.

ALSO: CARTOON

WED.-THURS. AUG. 31, SEPT. 1

"THE DEEP SIX" "Gorilla at Large"

In Color With Alan Ladd and Dianne Foster. With Cameron Mitchell and Ann Bencroft.

ALSO: CARTOON

SUBSCRIBE TODAY TO THE CHELSEA STANDARD!

Food costs up \$136 since 1947

farmer's share:

down \$8

Yes, for the average family, the cost per year of food products has gone up \$136 since 1947, according to official government figures. But the farmer who grows the food gets \$8 less than he did in 1947.

How, in the face of rising costs for everything he buys, has the American farmer managed to get along?

The answer is the wonder of the world—the astonishing, growing efficiency of the hard-working, businesslike American family farmer! Today he squeezes 51% more food out of an acre of land than thirty years ago. In the past 18 years alone, the farmer has boosted his efficiency as much as in the preceding 120 years...

and through progressiveness and mastery of new farming methods, he grows more and more efficient every day!

The increased efficiency of the American farmer benefits you, the consumer. Because of it, the percentage of your income you spend on food today is the lowest in history. Had the farmer received price increases at the same rate as most other cost-of-living items, you would be paying as much as 25% more today for food and clothing!

This is a record of which all Americans can be proud. Increased productivity of the farmer is one of the most important factors in keeping America the strongest nation the world has ever known.

WHERE YOUR MONEY GOES

Higher Labor Costs Added \$69  
Transportation Added \$21  
Other Business Costs Added \$47  
Higher Federal Taxes Added \$7  
FARM PRICES DOWN \$8

Increase since 1947 of all farm food products bought by average family in one year.

Source U. S. Department of Agriculture

MICHIGAN MILK PRODUCERS ASSOCIATION  
OWNED AND OPERATED BY 13,000 MICHIGAN DAIRY FARMERS

## EVERYTHING GOES!

AT YOUR FORD DEALERS' CLOSE-OUT SALE

America's lowest-priced 6-passenger wagon\*

Only America's station wagon specialists could bring you the Falcon Wagon! Over 7 feet of cargo-space length! Over 76 cubic feet of cargo-space volume! Come pick up your Falcon Wagon and save plenty!

JOY THUNDERBIRD ELEGANCE AT A FORD PRICE

Number One for fun in the sun! This Ford Sunliner is the coolest-looking convertible ever. And you can have it with the Thunderbird's personal power plant, the highly responsive 352 Special V-8! Save by buying now!

Best Trades

World's Most Elegant Wagon

Best Values

America's lowest-priced full-size sedan\*

Best Deals

America's lowest-priced 6-passenger sedan\*

SAVE MORE THAN EVER BEFORE

COME ONE, COME ALL

Everything—all 1956 models—must get ways trading high, wide and handsome! Cash or easy terms... trade or no trade, you name it! Don't delay... hustle in for the deal of your lifetime right now!

Palmer Motor Sales, Inc.

CHLSEA, MICHIGAN











**WANT ADS**

SALE—Gas heater. Used 8 mos. Phone GR 9-8042. -8  
RENT—3-room furnished apartment in Chelsea. Washing machine, utilities furnished. NO 8-8801. 81f

**WANT ADS**

**MUM PLANTS**  
All colors.  
Hundreds to choose from.  
From \$3.00 up  
**Chelsea Greenhouse**  
Phone GR 1940071

**WANT ADS**

FOR SALE—4-bedroom house. 2 baths. Gas heat. Double garage. Large lot. Close to downtown. Write Box JU 16, care of Chelsea Standard. 51f

**WANT ADS**

**PRESSURE-COOKED CHICKEN**  
Carry-out order available. Diners or snacks. Call GR 5-8200. Rob's Drive-In, Old US-12 and M-2. 8

**Attend National Conference Of County Officials in Florida**

Supervisor E. A. Wolter of Selo township, Supervisor Leigh Beach of Lima township, and Carl Johnson, County Administrator, attended the Silver Anniversary of the National Association of County Officials in Florida, this past week. They were asked to attend this conference and to report their findings to the Board of Supervisors at the next meeting.

The conference was devoted to many phases of county government, namely, county and the federal government, multi-county approach to area-wide problems, general county problems such as health, education, public health, port authority, Civil Defense, natural resources, county planning, agriculture, roads and highways, voting processes, automation, and record-keeping and finances. Simultaneous meetings were held on the above subjects.

Among the outstanding speakers were President Dwight D. Eisenhower (by tape), Vice-President Richard M. Nixon (by telephone), Senator Kennedy (by telephone), Senator Johnson (by telephone), Senator Kefauver, Senator Thurston, Senator Warren, Governor Warren of Florida, Edward Connor of Wayne county, Austin Kiplinger, Editor of Changing Times magazine, and Dr. Raymond Saulner, chairman of President Eisenhower's Council of Economic Advisors. The President welcomed the convention and hoped that the roots of government would remain at the local level and that the convention would work to that end.

Senator Morton stressed the importance of home rule for local government, and local government should not rely on the federal government for those things that can and should be done locally. Senator Kefauver said federal assistance should be given whenever local units do not meet the problem. He said federal aid without strings can be given.

Vice-President Nixon stressed the idea of local home rule government as close to the people as possible and hoped that federal aid would only be given in those areas where it would be impossible to do them locally with local funds. Federal aid must pass two tests he said. First, whether it will do the job; and second, whether it will strengthen or weaken local government control and responsibility.

Senator Kennedy stressed the importance of working together locally and federally, and assistance given in each area. Senator Johnson promised that he would do all he could to strengthen local government in the year ahead. Supervisor Connor advised each delegate to work as closely as possible with all other units of government to iron all matters of local area problems. He said it was

**Bareis School District Residents Hold Reunion**

A reunion of former residents of the old Bareis school district was held Sunday at the home of Miss Flora Schanz and her father, Otto Schanz, on Adams St. The old Bareis school, closed for many years, was located at the northeast corner of Fletcher and Trinkle roads until a few months ago when it was sold and moved to the Budreau farm on Trinkle Rd.

A new home is being built on the former school site for the Julius Bleess family. Former residents of the district and others who attended Sunday's reunion are Mr. and Mrs. Emanuel Bareis of Highland; the Misses Clara, Carrie and Amanda Bareis of Highland and Detroit; Mrs. Emma Seitz Mast, Mrs. Rose Seitz

Edwards, Mrs. Earl Heller Lowry and Mr. and Mrs. John L. Seitz of Ann Arbor. Also listed among those present were Mrs. Agnes Schanz Fisher, Mrs. Lydia Heller Zahn, Charles Zahn, Mrs. Erma Grau, Mrs. Elmer Winans and son, Charles, and Mrs. Emma Seitz, all of this vicinity; and Mr. and Mrs. Herman Schanz of Macon, and their daughter and family, Mr. and Mrs. Harold Holmes and daughter, Lois, of Milan.

Mrs. Emma Seitz Mast of Ann Arbor, was honored as the oldest former student of the Bareis school present.

Telephone Your Club News To GR 5-3581

**BOTTLED and HEATING GAS SERVICE**

**FLAMEGAS**  
SERVES AMERICA  
★ SAFE  
★ CLEAN  
★ DEPENDABLE  
Warden's Flamegas  
4221 Cedar Lake Drive  
Phone GR 9-5961  
Flamegas Ypsilanti  
5025 Carpenter Road (US-23)  
Phone Ypsilanti HU 2-4522

**WANT ADS**

Wanted to RENT—2 to 3-bedroom home in Chelsea area by an MSU field instructor. Reasonable. References. Call collect. Lansing. Edgewood 2-1477. -8

**WANT ADS**

FOR SALE—Truck platform with grain and stock rack, 6 ft. x 11 ft. 6 in. L. P. Bietenwischer, 8922 M-2, Manchester. 8

**WANT ADS**

Country home on 4 acres. Tinklen oil heat. Reasonably priced.

**WANT ADS**

2 other homes on blacktop. Oil heat. Larger one has 3 bedrooms, aluminum siding, attached garage, with other buildings. Other nearby new with 2 bedrooms. Low down payment.

**WANT ADS**

New listing in Chelsea. 3-bedroom home. New modern kitchen and new gas furnace.

**WANT ADS**

MINNIE SCRIPTER, BROKER  
Chelsea Phone GR 9-2789  
If no answer call GR 5-4311

**WANT ADS**

FOR SALE—Bendix combination washer and dryer. In good condition. \$20. GR 9-2282. 71f

**WANT ADS**

SAND - GRAVEL  
STONE - FILL - DIRT

**WANT ADS**

Basement Digging — Bulldozing. Cranes Work—Beach Building. FREE ESTIMATES

**WANT ADS**

RE-ROOFING — Johns-Manville shingles. Expert workmanship. Dial GR 5-3391. Chelsea Lumber Co. 8

**WANT ADS**

PEACHES  
RED HAVEN  
RURBANK ELBERTA  
NOW READY

**WANT ADS**

Czapla's Orchard  
1817 Rank Rd. GR 9-0408

**WANT ADS**

FOR RENT—Clean, pleasant upstairs apartment. Electric stove and refrigerator furnished. Heat furnished. Phone GR 5-5547 after 6 p.m. 21f

**WANT ADS**

REVOLUTIONARY new Dutch Boy latex house paint is easy to apply without sagging or lap marks. Highly resistant to blister.

**WANT ADS**

FOR SALE—Farm, lake-front cottages, lake lots, all acreage. Leo A. Guin. 1478 Sugar Land Lake. Phone GR 9-4748. 8

**WANT ADS**

FOR SALE—1953 Chevrolet. 1714 Dancer Rd. Phone GR 9-3011. 8

**WANT ADS**

WAITRESS—Full or part time. Inside only. Apply in person. Rob's Drive-In. Old US-12 and M-2. 8

**WANT ADS**

FOR RENT—Furnished 3-room upstairs apartment. Ideal for teachers. Phone GR 5-8276. 9

**WANT ADS**

FOR SALE—Used Keltorator reaper runs well. \$465. Crossed. Phone GR 5-8334. 8

**WANT ADS**

BOB FITZSIMMONS  
North Lake  
Phone Chelsea GR 9-5701. 331f

**WANT ADS**

FOR RENT—Clean, pleasant upstairs apartment. Electric stove and refrigerator furnished. Heat furnished. Phone GR 5-5547 after 6 p.m. 21f

**WANT ADS**

FOR SALE—Farm, lake-front cottages, lake lots, all acreage. Leo A. Guin. 1478 Sugar Land Lake. Phone GR 9-4748. 8

**WANT ADS**

WAITRESS—Full or part time. Inside only. Apply in person. Rob's Drive-In. Old US-12 and M-2. 8

**WANT ADS**

FOR RENT—Furnished 3-room upstairs apartment. Ideal for teachers. Phone GR 5-8276. 9

**BICYCLE BACK TO SCHOOL**  
on a  
**NEW SCHWINN**  
★ LOW DOWN PAYMENT  
★ WE TRADE

**AMERICA'S BEST BIKE BUY!**  
**Schwinn**  
**TORNADO**

**TAKE YOUR CHOICE!** \$41.95  
Boys Girls  
You get famous Schwinn quality construction at a rock-bottom low price in the Schwinn Tornado! Trim, middleweight model with coaster brake. Comes in 26, 24 and 20-inch sizes. Boys in Red, Girls in Blue.  
DON'T DELAY... QUANTITIES LIMITED!

**PROOF! YOUR DOLLARS BUY MORE with Schwinn Specials**  
NEW... ALL NEW! the **Schwinn TIGER**  
Terms as low as \$56.95  
You get MORE FOR YOUR MONEY in the Schwinn Tiger! Schwinn Quality construction—plus 3-speed gears, hand brakes, front carrier, chrome headlight, chrome rims and whitewall tires. Comes in 26, 24 and 20-inch models.  
**W. F. KANTLEHNER**  
JEWELER - OPTOMETRIST  
"Where Gems and Gold Are Fairly Sold"  
102 E. Middle Ph. GR 9-5721

**Give the Gift of Time...**

**FOR HIM**  
**FOR HER**  
**FOR JUNIOR**  
**FOR JANE**  
FAITH 17 Jewel water and shock resistant. Expansion band.  
FAITH Petite style, beautifully detailed, 17 Jewels.  
FAITH Rugged—water and shock resistant.  
FAITH Delicately styled with smart new lines. Cord band.  
ALL FAITH WATCHES ARE UNCONDITIONALLY GUARANTEED IN WRITING.  
Priced from \$22.00 up  
**W. F. KANTLEHNER**  
JEWELER - OPTOMETRIST  
"Where Gems and Gold Are Fairly Sold"  
102 E. Middle Ph. GR 9-5721

**PEACHES**  
ROCHESTER and FAIR HAVEN  
Delicious for Eating... Best for Freezing  
**PETERSON ORCHARDS**  
BRUIN LAKE  
Follow orange signs from North Lake to our orange-trimmed building.  
Peaches Sold by Quart, Peck, or Bushel

**Our Bonus—Extra Years**  
We have a bonus today—extra years of life that everyone may enjoy. Better living conditions, improved sanitation and health measures have helped us add years to our lives. Greatly improved medicines and better hospital care have contributed toward these extra years.  
You can get an extra bonus—from your own efforts. You can add years of abundant, healthy, enjoyable life, through your care of the health you have today.  
Regular visits to your physician, and faithful attention to his suggestions are important elements of this care. The use of the medicines he prescribes, compounded in a Pharmacy such as ours, will help you get those extra years—your health bonus.  
**CHELSEA DRUG**  
C.M. Lancaster—Reg. Pharmacist  
Call GR 9-4411 for Free Delivery  
"Four Registered Pharmacists Available 24 Hours a Day"

**UNADILLA**

Mr. and Mrs. John Evans of Detroit visited Mrs. Amelia Biehn Saturday.  
Mrs. Lloyd May and children, of Brighton, visited Mrs. Clarence Embury Friday.  
Max Kalmabach and Walter Rose were Sunday dinner guests of Mrs. Marguerite Hadley and Mr. and Mrs. Reamon Hadley. Evening guests were Mr. and Mrs. George Kuntzman.  
Mr. and Mrs. Kenneth Van Buren and children spent a few days last week at Houghton Lake.  
Mrs. Louis Kaiser and Victor Ewers were in Detroit, Friday.  
Mrs. Clara Roepke spent a few days last week visiting friends at Chesaning and attending a school reunion there.  
Sunday dinner guests of Mr. and Mrs. Howard Pickett were Mrs. Amelia Biehn and Mrs. Maud Coons.  
Mr. and Mrs. Pete Jaskot and son, of Chelsea, spent Sunday evening with Mr. and Mrs. Clarence Embury.  
Mrs. Marguerite Hadley, who has been convalescing at the home of her daughter in Okemos, has returned to her home here.  
Sunday visitors of Mr. and Mrs. Louis Kaiser were Mrs. Lottie Salters and Mrs. Lillian Cone of Belleville, and Mrs. Helen Powers.  
Mr. and Mrs. Reamon Hadley spent the past week in Chicago.  
Mr. and Mrs. Clair Barnum spent the week-end with Mr. and Mrs. Roland Gorton in Beulah. Ralph Gorton, who has been visiting here, returned to his home with them.  
Mrs. Martha Lyons and Mrs. Louise Watson of Lansing, Mr. and Mrs. Francis Richmond, Mrs. Amelia Biehn, Mrs. Virg Pyper, Mrs. Mary Maschke and Mr. and Mrs. Jack Jackson were last week callers of Mrs. Mymie Rose.

**Michigan's Finances More Healthy Than Popularly Believed**

East Lansing—The national image of Michigan as a state on the verge of bankruptcy, despite a heavy tax burden on its individual citizens, is simply not true, speakers at an economic workshop at Michigan State University generally agreed.  
"Michigan has the money; it's only a matter of how best to raise it," Dan E. Reed of the Michigan Farm Bureau told participating teachers and administrators.  
"The Michigan tax burden per unit of individual income is below the national average," said Clarence W. Lock, commissioner of the Michigan Department of Revenue. "Michigan ranks a very favorable 31st in this category in comparison with other states."

**CHICKEN BAR-B-Q**  
St. James Episcopal Church  
DEXTER  
Saturday, Aug. 27  
5 - 7:30 p.m.  
\$1.50 per plate  
(Extra Plates for Children)  
**TAKE-OUTS AVAILABLE**

**BURGHARDT FUNERAL HOME**  
214 E. MIDDLE ST. CHELSEA  
Phone GR 5-4141 or GR 5-5141

**- SPECIALS -**  
1-QT. JAR SHEDD'S Salad Dressing . . . . 31c  
2-LB. PKG. Fig Bars . . . . . 39c  
LARGE BOX Ritz Crackers . . . . . 25c  
WHITE, YELLOW AND CHOCOLATE FUDGE 'Jiffy' Cake Mix 3 pkgs. 25c  
We Have Howell Honey Sweet Melons  
**KUSTERER'S**  
FOOD MARKET  
DIAL GR 9-3331 WE DELIVER

**CAR-TUNES**  
AUTO SERVICE  
"WAIT! GIVE ME ONE MORE CHANCE TO REMEMBER WHERE THE GAS CAP IS LOCATED!"  
If this man had come to us for gas he wouldn't be in this predicament! We keep abreast of the latest developments in car design (including the unusual variations). In fact, we know ALL cars inside and out, which is why our servicing is always right on the beam!  
**Alber Motor Sales, Inc.**  
Gulf Products - DeSoto - Plymouth - Valiant  
295 SOUTH MAIN STREET CHELSEA, MICH.



APPLICATION BLANK—KIWANIS SPONSORED  
**Chelsea Community Fair Amateur Contest**  
 THURSDAY, SEPT. 8, 1960—7:30 p.m.  
 \$100.00 in Prizes

Name \_\_\_\_\_ Age \_\_\_\_\_  
 Address \_\_\_\_\_ Telephone \_\_\_\_\_  
 Vocal, Instrumental, Pantomime, etc. \_\_\_\_\_  
 Solo, Duet, Trio, Quartet, etc. \_\_\_\_\_  
 Accompanist \_\_\_\_\_  
 Parent's Signature \_\_\_\_\_  
 Applications to be mailed to:  
 Paul F. "Jerry" Niehaus, 209 Jefferson Street, Chelsea  
 not later than Sept. 1, 1960.

## Community Calendar

Limaneers, Thursday, Sept. 1 at home of Mrs. John Metzger, Potluck dinner 12:30 p.m.

St. Paul's Women's Guild Circle leaders or anyone interested may now pick up the September-October "Daily Devotions Guide" or Family Devotions booklet at the church.

## BIRTHS

A son, James Donald, Jr., Tuesday, Aug. 16, at St. Joseph Mercy hospital, Ann Arbor, to Mr. and Mrs. Donald Alexander, 147 Orchard St.

A son, Robert David, Tuesday, Aug. 16, at Foote hospital, Jackson, to the Rev. and Mrs. David Woolf.

The Office of Vital Statistics has given the tentative total of registered May births—subject to correction by the end of the year—as 335,000, compared with 338,000 in May, 1959.

St. Paul's Mission club Thursday, Sept. 1, 2 p.m., at the home of Mrs. Oscar Lindauer.

Work on Class of '60 float begins Friday, 1 p.m., Dudley Holmes garage. All come to help.

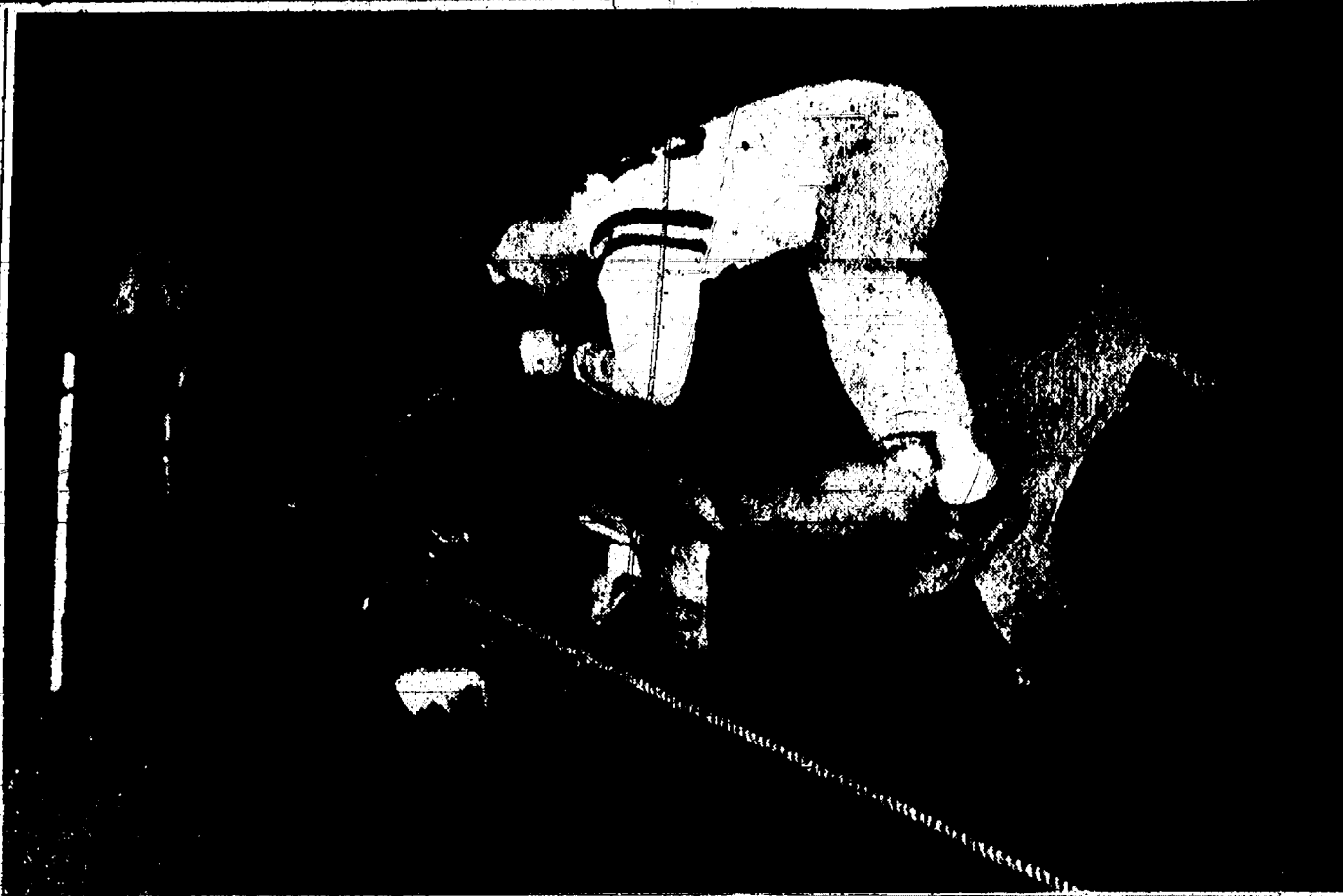
## Proving Grounds Local Authorized To Call Strike 'If Necessary'

A total of 109 votes were cast Thursday in the strike vote of Chrysler Proving Ground employees who are members of Local 1284, UAW-AFL-CIO.

The election issue was for authorization to take strike action, if necessary, to obtain the "change in working conditions" demanded.

Jack Taylor, union president, said yesterday every effort is being made to obtain the "changes" demanded without taking strike action.

The vote at Thursday's election was 148 "yes" and 51 "no" or a total of 74 per cent authorizing the strike action if needed.



OVER THE TOP! Chelsea High school's assistant football coach, Truman O'Doherty, gave a good account of himself Friday at the Jaycees-sponsored donkey baseball game before he became separated from his donkey. The above action photo shows him just a moment before he was "grounded" for the umpteenth time.

## Circuit Judge James Breakey To Seek Supreme Court Post

It was announced during the past week that Circuit Judge James R. Breakey, Jr., had agreed to seek the nomination for the office of justice of the Supreme Court when Republicans hold their state convention Saturday in Detroit.

Judge Breakey had been unanimously endorsed for the state court post at the Washtenaw county Republican convention in Ann Arbor on Aug. 10.

A committee of Ann Arbor citizens has been formed to conduct a state-wide campaign to have him nominated at Saturday's convention. Alfred A. Sullivan, of Ann Arbor, vice-president of the Washtenaw Abstract Co., was named

temporary chairman of the committee.

The non-partisan judicial election Nov. 8 is to fill the remaining five years of the Supreme Court term of Justice John D. Voelker of Ishpeming who resigned last year.

All Michigan Republican county chairmen have been sent letters carrying the signature of Wendell Hobbs, Washtenaw county Republican chairman, in which he details Judge Breakey's qualifications for the Supreme Court post.

The letter quotes as follows from an April 21 article in a Detroit newspaper:

"Breakey's work record stands out like the Babe Ruth mark on the home run chert. His court

disposed of 1,390 cases in the year 1957. The state average for judges is 783."

The letter by Hobbs notes that Breakey has had more than 15 years of experience as a trial judge and is recognized throughout the state.

"He pioneered Michigan pre-trial procedures, supervision of inferior courts, marriage counseling in domestic relations cases and schooling for probationers," the letter adds.

"He is a winning candidate... he was a Republican leader before ascending the bench and has been a vigorous, successful candidate for judicial election," the letter states.

Sullivan, who was among a group of leaders in organizing the committee to get Judge Breakey nominated, was quoted as follows:

"We don't think anyone can match his record. It is as good or better than any circuit judge in the state."

Other leaders active in organizing the committee are Prosecuting Attorney William Ager, Gordon Gable of Ypsilanti, and Edmond F. DeVine and Douglas K. Reading of Ann Arbor.

The Ypsilanti Bar Association has gone on record with a resolution urging the candidacy of Judge Breakey.

The resolution mentioned that he had served the county as Circuit Judge for more than 15 years and had earned the "unflinching admiration and respect of his fellow citizens including judges and members of the bar."

"Though his elevation to the supreme bench would be a severe loss to Washtenaw county, it would on the other hand be a monumental gain for all the people of Michigan," the resolution concluded.

However, marriages were up. There were about 120,000 in May, 3.4 per cent more than in May, 1959.

## Attend Bowling Management School in Chicago

Olie Johnson, manager and co-owner, and William W. Freeman, co-owner, of Chelsea Lanes, 1180 M-92, were in Chicago the past week to attend the Brunswick Bowling Management school.

The school has been conducted for the last five years by Brunswick Corp., to present the fundamentals of bowling management to owners and operators of bowling establishments.

Approximately 2,000 persons from all 50 states, Europe and Asia have graduated from the Brunswick school. Subjects ranging from accounting and insurance to maintenance of lanes and business promotion are covered at the nine-day session.

Chelsea Lanes is scheduled to open for business about Sept. 1.

## Chelsea Team Challenges in League Play

A baseball team composed of Chelsea men is completing the first season of play with the newly-formed Adult Baseball League of Ann Arbor and at the end of last week's play was in second place with a record of nine wins and four losses. The Chelsea team is named the "Chelsea Merchants."

Members are Jim Miller, pitcher and first baseman; George Staffan, second base; George Heydlauff, short stop; Matt Murphy, third base; Hugh Weinberg, catcher and first base; and outfielders Bob White, Odie Richardson, Jim Klobuchar, Jerry Lehman, Kenny Larson and Dan Murphy.

Rated as the No. 1 pitcher on the team is Bob DeFant who pitched a perfect game against the league-leading MacPherson team. Sharing honors as the season's outstanding hitters are Odie Richardson, George Staffan, Hugh Weinberg, Bob DeFant and Matt Murphy.

George Heydlauff and the outfielders have done an excellent job of fielding on a number of occasions.

Given a big share of the credit for the success of the team are the pitchers, Bob DeFant, Jim Miller, Hugh Weinberg and Matt Murphy.

Other teams in the league include Quality Bakers in third place and 20th Century in fourth place.

Challenging Chelsea added two marks to its win column by defeating 20th Century with a quick run in the playoff of a July 25 tie and then claiming a 5-2 victory in a five-inning regular game.

Meanwhile, Quality Bakery held MacPherson's to a 4-all standoff to spoil the former's hopes of clinching at least a share of the championship.

Three full games as well as Thursday night's deadlock remain unsettled. One involves the leader and runnerup while MacPherson's also has remaining one contest with Quality and Chelsea one with 20th Century.

Chelsea's Jim Miller and Odie Richardson and 20th Century's Frick and Tom Kover were the pitchers in the regular game which ended in a 5-2 victory for Chelsea.

## Mrs. R. Stark Graduates Front School of Nursing

Mrs. Richard Stark, the former Olive Ann Reddeman, daughter of Mr. and Mrs. Clarence Reddeman, was among the 135 graduates of Detroit and Ann Arbor units of the Mercy School of Nursing of Detroit.

A graduate of Chelsea High school with the class of 1957, she had been active in 4-H club work and won many 4-H honors.

During her nurse's training, Mrs. Stark was a member of the Nurses Glee Club and was elected secretary of the class in her junior year. She was married to Mr. Stark on May 28 and they are making their home at Rogers Corners.

Mrs. Stark will be working at St. Joseph Mercy hospital, Ann Arbor. Graduation exercises for the class were held in Ford Auditorium, Detroit, Saturday, with the Rev. Fr. Clement J. Espar of Sacred Heart Seminary, presiding.

Honors and diplomas were conferred by the Most Reverend John A. Donovan, Auxiliary Bishop of Detroit, following presentation of candidates by Sister Mary Janice, RSM, executive director of the Mercy School of Nursing of Detroit.

The commencement address was given by the Rev. Fr. Arthur Moloch, of Holy Family Retreat, O'Leary, Ontario.

Barbara Jean Collins, daughter of Mr. and Mrs. William Collins, also was a member of the graduating class. Her picture and the story of the commencement exercises was published in the Aug. 18 issue of The Standard.

Confusion resulting because Mrs. Stark's mailing address is Ann Arbor, was the cause of a delay in receiving information about her graduation in time for publication along with the information about Miss Collins.

At Saturday's exercises it was announced that Miss Collins was one of six members of the class who graduated with magna cum laude honors.

Relatives and friends of the two



MRS. RICHARD STARK

## NOTICE

KRAFTY PRODUCTIONS

Upholstering Co.

announces their new location

425 N. MAIN ST. GREGORY, MICH.

Temporary headquarters of construction of our new building will be in my home at the address.

Savings up to 40% on reupholstering and reupholstering furniture.

A SHORT DRIVE TO GREGORY IS A BIG SAVINGS TO YOU

Phone ALpine 6-2800

## Gambles

The Friendly Store

# SPECTACULAR NEW HOUSE PAINT

THE GREATEST ADVANCE IN HOUSE PAINT IN 50 YEARS

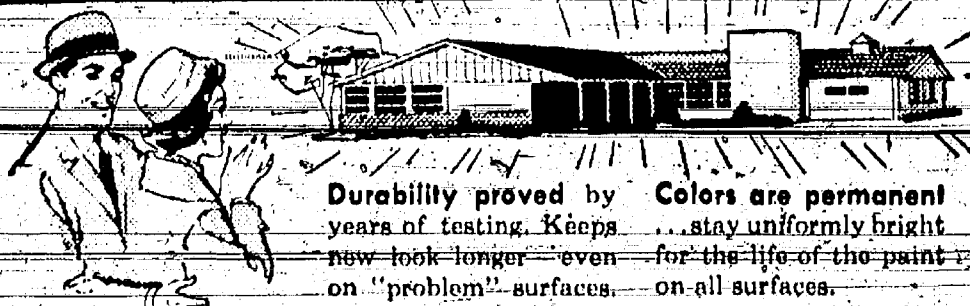
It's Sherwin-Williams new A-100\* Latex House Paint—it flows on easier, lasts much longer, has unprecedented color retention. Colors stay bright for the long life of this new paint.

Sherwin-Williams A-100 Latex House Paint is all new. New in its ease of application—new in its amazing durability—new in its resistance to blistering. Prepare the surface properly and watch with pride

how this new paint gives your home a degree of protection and beauty it has never had before. It dries bug-free, dust-free in 30 minutes. Once it's had time to set, rain won't harm it. When the rain stops, go right on painting.

See your Sherwin-Williams Authorized Dealer or Branch for the new A-100 Latex House Paint. You'll find the address in the Yellow Pages.

## NEVER BEFORE ALL THESE ADVANTAGES...

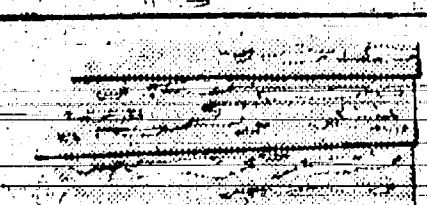


Durability proved by years of testing. Keeps new look longer—even on "problem" surfaces.

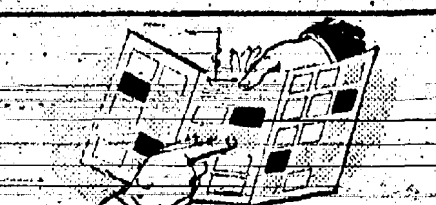
Colors are permanent—stay uniformly bright for the life of the paint on all surfaces.



"Sets" fast so that rain won't harm it. Dries dust-free, bug-free in just 30 minutes.



Blister-resistant—when surfaces are properly prepared. Resists moisture which causes blistering.



Never before such a range of beautiful colors! Paint your house any color including popular pastels.



Flows on so easily without brush drag—it's the new quick way to paint. Afterward, brushes clean up in water.

## OUTSTANDING RESULTS ON WOOD OR MASONRY

Perfect for Clapboard, Stucco, Cement, Brick, Shakes, Shingles (wood or asbestos).

**SPECIAL NOTE**—to owners of houses with blistering or paint-peeling problems. A-100 Latex Paint can be the solution if proper attention is given to surface preparation. Ask your Authorized Dealer or Branch.

**SHERWIN-WILLIAMS**  
 A-100\* LATEX HOUSE PAINT



and in oil-type house paints, famous SWD House Paint is the standard of quality throughout the world.



ALWAYS BETTER BUYS AT GAMBLES...

## WALL TILE BARGAINS

FOR DO-IT-YOURSELFERS

**FINEST QUALITY HEAVY-GAUGE PLASTIC WALL TILE** lends lustrous beauty to bath or kitchen walls. A swish of the cleaning rag keeps it sparkling bright!

BARGAIN PRICED AT ONLY **35¢** sq. ft.

## FLOOR TILE

**TERRAFLEX** by Johns-Manville, a vinyl-asbestos tile with the beauty and durability you want.

SPECIALY PRICED AT ONLY **11 3/4¢** sq. ft.

DIAL GR 5-3391

**EVERYTHING**  
 FOR HOME IMPROVEMENT

**CHELSEA LUMBER CO.**



Drive In Now! Get The Details on

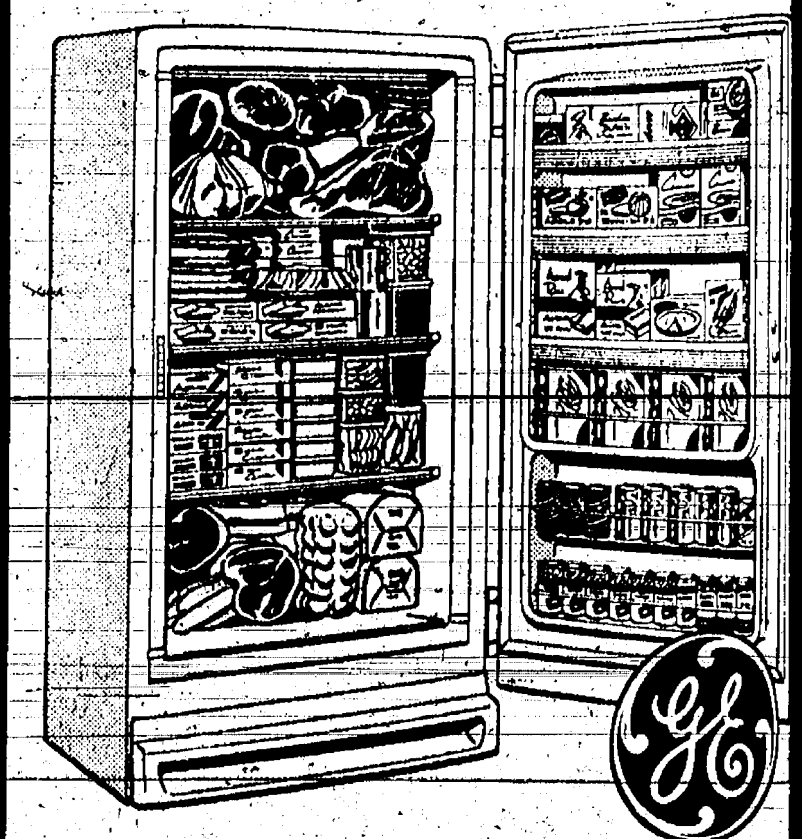
**SMILE-maker SERVICE**

GUARANTEED To Satisfy You Or We Pay

Our Sweepstakes Prize of Aug. 22, a Red Man Pig Basket with Lustra-Ware was won by Frieda Kiss.

## Dettling's Marathon Service

Corner S. Main and Old US-12 Phone GR 5-7800



**385 lb. Capacity GE**

## Upright Freezer

On Sale at Only

**\$199.50**

SHOP and SAVE at

**Frigid Products**

L. R. HEYDLAUFF

113 N. Main St.

Phone GR 9-6651



## DEATHS

### Mrs. Frank Edgar North Lake Native Dies Following Heart Surgery

Mrs. Frank Edgar, wife of Major Frank M. Edgar of Colon, Canal Zone, died Thursday, Aug. 18, at the National Institute of Health, Bethesda, Md., following heart surgery.

Mrs. Edgar is survived by her husband and three children, Michael, Deborah and Dianne; three sisters, and two brothers, Mrs. Harold Stott (Virginia) St. Petersburg, Fla.; Mrs. W. S. Walsh (Kay) Lancaster, Pa.; Mrs. Frank Z. Thomas (Treva) Sylvania, O.; C. Stanley Evans, Findlay, O.; and W. J. Evans, Detroit.

Mrs. Edgar was the daughter of the late Mr. and Mrs. W. J. Evans of North Lake.

### Mrs. L. Riemenschneider Dies Here Saturday After Extended Illness

Mrs. Louise Riemenschneider, of 66 Cavanaugh Lake, died Saturday at Colonial Manor Nursing Home where she had been cared for since Aug. 4. She had been hospitalized in area hospitals at intervals during her long illness prior to entering the nursing home here.

She was a member of St. Mary's Catholic church.

Born at Three Rivers, Aug. 17, 1883, she was a daughter of Herman and Sophia Kushman Hessmer.

She was married in 1913 at Detroit to Dr. LaVerne Riemenschneider and they made their home at Three Rivers for six years before moving to Detroit where Dr. Riemenschneider was a practicing dentist for 46 years.

They moved to their Cavanaugh Lake home following his retirement. Dr. Riemenschneider died March 15, 1960.

Survivors of Mrs. Riemenschneider are a sister, Miss Clara Hessmer of Cleveland, O.; a brother, Charles Hessmer of Eastlake, O.; and several nieces and nephews.

The Rosary was recited at 8 p.m. Monday at the Staffan Funeral Home and funeral services were at 10 a.m. Tuesday at St. Mary's church with the Rev. Fr. Leo J. Smith officiating. Burial took place at Oak Grove cemetery.

### Mrs. Cora Belle Kreider Native of Monroe Dies At Methodist Home

Mrs. Cora Belle Kreider, 83, died Tuesday evening, following several months' illness, at the Methodist Home where she had resided since Sept. 2, 1959. She came to the home from Monroe.

Born Dec. 8, 1876, at Oak Harbor, O., she was a daughter of Valentine and Frances Kinney Feltner. Her husband, John Kreider, to whom she was married in 1915, died in 1930.

Mrs. Kreider was a member of the Order of Eastern Star at Elkhart, Ind.

Survivors are a daughter, Mrs. Nellie Gates of Bay City; a son, Clifton Gray of Monroe; a sister, Mrs. Elta Maddox of Cleveland, O.; five grandchildren and 10 great-grandchildren.

Funeral services will be held at 10 a.m. Friday at the Methodist Home Chapel with the Rev. E. J. Weiss and the Rev. George P. Stanford officiating. Burial will take place at Roselawn Memorial Park, Monroe.

Friends may call at the Burghardt Funeral Home.

### Miss Florence Ward Dies Wednesday, Aug. 17 At Ann Arbor Hospital

Miss Florence Ward, a Chelsea area resident, most of her life, died Wednesday, Aug. 17, at an Ann Arbor area hospital, following a long illness. She was 81 years old.

Born Jan. 5, 1879, at Jackson, she was a daughter of George and Flora Riggs Ward. She was a member of Congregational church and for many years was a member of the church choir. She was a life member of Olive Chapter No. 108, Order of Eastern Star.

Survivors are several cousins, including Mrs. Otto Hinderer of Chelsea.

She was preceded in death by her parents, a brother, Floyd and a nephew, Judson Floyd.

Funeral services were held at 2 p.m. Saturday at the Staffan Funeral Home with the Rev. Philip Rusten officiating. Burial took place at Oak Grove cemetery.

### Mrs. Maude Newark Chelsea Resident Since 1938 Dies at Methodist Home

Mrs. Maude Newark, 88, who formerly made her home with Mrs. Harry Foster, 246 Jefferson St., died Friday at the Methodist Home where she had resided since Oct. 25, 1957. She had been a Chelsea resident for more than 20 years.

Mrs. Newark was born in Detroit, July 11, 1872, a daughter of Austin and Anna Crouse Humphrey. Feb. 2, 1897, in Detroit, she was married to Guion Newark. They moved to Chelsea following his retirement in 1938.

Funeral services for Mrs. Newark were held Monday at 10 a.m. at the Methodist Home Chapel. Officiating clergyman were the Rev. E. J. Weiss and the Rev. George P. Stanford, superintendent and chaplain, respectively, at the Methodist Home, and the Rev. S. D. Kinde, pastor of the Chelsea Methodist church. Burial took place in Oak Grove cemetery.

Funeral arrangements were in charge of the Staffan Funeral Home.

### Sister Arrives from Germany To Visit Mrs. Adolph Duerr

Mrs. Pauline Fritz of Lofch, Wuertemberg, Germany, arrived here Tuesday for a stay of two or three weeks with her sister, Mrs. Adolph Duerr and family. Mrs. Duerr's husband entered University Hospital, Ann Arbor, Monday and is to undergo heart surgery there today. Mrs. Fritz made the trip from Germany by plane, arriving at Metropolitan Airport, Detroit at 9:30 p.m. There to meet her when the plane arrived were Mrs. Duerr and Mr. and Mrs. Lawrence Riemenschneider.

MYSTERY FARM NO. 112—Because only one of the two homes on the farm is visible in the photograph, published as "Mystery Farm No. 112," this photo proved confusing to many. Trees obscure the larger home, in which the owner, Mrs. Philip Seitz, lives. The farm is located at 687 South Lima Center Rd. The photo was originally published without identification in the Aug. 18 issue of The Standard.

## Mrs. Philip Seitz Is Owner of Last Week's 'Mystery Farm'

Mrs. Philip Seitz is the owner of Mystery Farm No. 112, at 687 South Lima Center Rd., all of which does not show in the photograph, originally published in the Aug. 18 issue of The Standard. The many large trees in the driveway screen the home shown at the lower front in the photo is a ten-house now occupied by Mr. and Mrs. Robert Wirtz and their daughter, Denise. Mr. Wirtz is employed at Chrysler Proving Ground.

Mrs. Philip Seitz bought the 120-acre farm in 1925. Mr. Seitz operated the farm himself many years with the help of William Henry Seitz, who over full responsibility when Mr. Seitz was no longer able to work.

William Henry was married to Virginia Lehman and they lived in their home in the small town shown in the photo. The home, shown just behind the large, was formerly the kitchen of the home. It was moved to present location and converted to use as a garage when the house was remodeled at the time.

**BONDS - GENERAL**  
**HEALTH AND ACCIDENT**  
**INSURANCE**  
Representing the  
**ROYAL GLOBE**  
and  
**COMMERCIAL UNION**  
**INSURANCE GROUPS**

Greenwood 5-5181  
Chicago: Greenwood 9-1171

**MARTIN E. MILLER**  
525 MCINLEY STREET  
CHELSEA, MICHIGAN

time William Henry and Virginia Seitz were married. The present modern kitchen was added at that time.

Mr. and Mrs. William Henry Seitz had one son, Gary, now a Chelsea High school student.

William Henry died Aug. 26, 1956, as the result of a farm accident. His widow, Virginia, is now employed at Chelsea State Bank. She and her son now live at 4017 Notten Rd.

William Henry's father, Philip Seitz, died two months later, on Oct. 10.

A son-in-law of Mrs. Philip Seitz, Herbert Hinderer, now operates the 120-acre farm for her, in addition to his own farm at Rogers Corners. His wife is the former Lorena Seitz and they have one son, Ernest.

Another daughter, Irene Seitz, is employed in the Washtenaw county clerk's office at Ann Arbor.

Hinderer does general farming on the place and customarily has hogs, sheep and feeder cattle. Mrs. Seitz also keeps chickens.

The Seitz farm was originally owned by members of the Freer family who were early owners of large tracts of land in the area. It was purchased in 1897 by John B. Cooley from Elisha Freer. It could not be determined if Elisha Freer was a relative of his, however, a Gabriel and Lewis Freer are believed to have been Cooley's cousins.

The farm was known for many years as the Cooley place. John Cooley, who was born in Seneca county, N. Y., Aug. 17, 1823, was married Jan. 14, 1852, to the former Julia M. Clark, and they became the parents of seven children. Only two, however, lived to adulthood—Alice Cooley, who was married to Jay Wood of Lima township, and Francis Cooley who married George T. English. Both were prominent in community affairs throughout their lives.

Mrs. John Cooley died in 1887 and Mr. Cooley died in 1895.

Following his death, the two daughters, Mrs. Wood and Mrs. English, inherited the farm and Mr. and Mrs. Wood bought Mrs. English's interest and became sole owners.

Both daughters were married at the home of their parents—Mrs. Wood on Aug. 26, 1876, and Mrs. English on Nov. 22, 1883.

The small house shown in the photograph was built in 1876 as a home for Mr. and Mrs. Jay Wood. The Woods' two children, May and Mrs. Otto Luick of 607 South Main St., and the late Dr. Orlando G. Wood of Hart, were born while the Woods lived in the small house. They later moved to Grass Lake where they remained for six years, returning to the farm after the death of Mrs. Cooley.

Mr. and Mrs. English—the other daughter and son-in-law of the Cooleys—made their home in the little house on the farm for four years following their marriage in 1883.

The Jay Woods lived in the big house on the farm until they retired in 1920 and moved to Chelsea. At that time they sold the farm to Mr. and Mrs. Guy Kimball who came here from Illinois and Mr. and Mrs. Philip Seitz bought it from the Kimballs five years later.

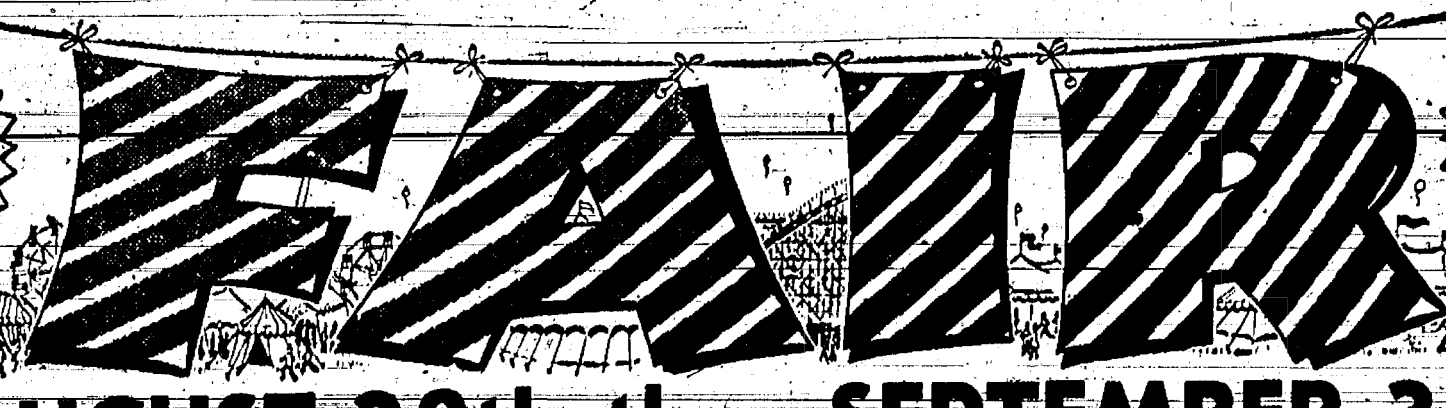
Mrs. Luick remembers that an old house, probably the original home on the farm, stood for many years at the south rear corner of the big house and was used as a tool shed and shop.

Among those who called The Standard office to identify the Philip Seitz farm are Allen Broos, Ann Arbor, and Anton Nielsen at Farmers Supply Co., Irene Seitz of Ann Arbor, Norman Dibble, Mrs. Philip Seitz, Mrs. Robert Wirtz, Helen Rothfuss, Gary Seitz, Mrs. Ray Parsons, and the men at Blassis Elevator Co.

James Monroe was President of the U.S. when Florida was purchased from Spain.

Mrs. Luick remembers that an old house, probably the original home on the farm, stood for many years at the south rear corner of the big house and was used as a tool shed and shop.

Among those who called The Standard office to identify the Philip Seitz farm are Allen Broos, Ann Arbor, and Anton Nielsen at Farmers Supply Co., Irene Seitz of Ann Arbor, Norman Dibble, Mrs. Philip Seitz, Mrs. Robert Wirtz, Helen Rothfuss, Gary Seitz, Mrs. Ray Parsons, and the men at Blassis Elevator Co.



**COME TO THE JACKSON FAIR**

**BIG DAYS AUGUST 28th thru SEPTEMBER 3rd 7 BIG NIGHTS**

**Southern Michigan's Cleanest and Best Fair!**

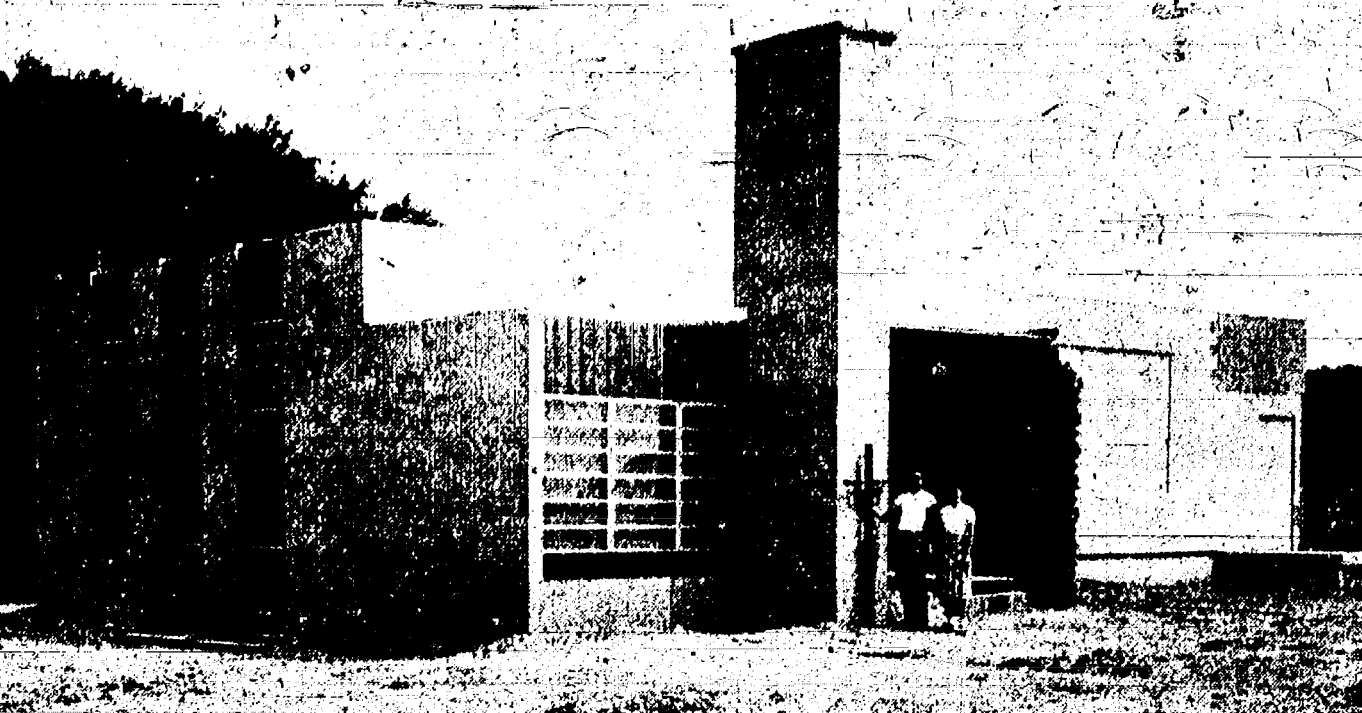
**Fun for All... Bring the Family!**

<p><b>Featuring for 6 Days:</b></p> <p><b>"BOB" CROSBY</b> in Person</p> <p><b>One Taylor Company of Dancers</b></p> <p>and</p> <p><b>Ralph Marterie and His Band</b></p> <p>and other acts</p> <p><b>EVENINGS AT 8 p.m. - GRANDSTAND</b></p> <p><b>BASEBALL GAMES</b></p> <p>County Championship - Pony, Little Leagues</p> <p>Double-Headers Every Day</p> <p><b>4-H CLUB ACTIVITIES</b></p> <p>Agricultural Building - Daily</p> <p><b>FAT STOCK SHOW</b></p> <p>Auction Friday</p> <p><b>SUNRISE RELIGIOUS SERVICE</b></p> <p>Sunday, August 28th - 7:45 a.m.</p>	<p><b>Fantastic Atomic Energy Display</b></p> <p>Monday - Tuesday - Wednesday</p> <p><b>FIREWORKS—Monday, Tuesday, Wednesday.</b></p> <p><b>DOLL DERBY—Inquire at Fair Office on Entries.</b></p> <p><b>HORSE SHOWS—Open Trailer Junior Horse Show</b></p> <p>For Friday, Sept. 2nd. Open Senior Horse Show</p> <p>All Day Saturday, Sept. 3rd. (Bleacher Seats for Spectators.)</p> <p><b>\$40,000 IN AWARDS</b></p> <p>Enter Your Fruit and Vegetable Exhibits Now!</p>	<p><b>THRILLS - EXHIBITS</b></p> <p><b>RACES - EVENTS</b></p> <p><b>HARNESS RACING - 1 p.m.</b></p> <p>Aug. 30-31, Sept. 1</p> <p><b>HORSE RACES</b></p> <p>Aug. 29th - Sept. 2nd. 1:30 p.m., 10 a.m.</p> <p><b>Famous Chitwood Thrill Shows</b></p> <p>Sunday, Aug. 28th 2 p.m. and 8 p.m.</p> <p>Grandstand</p> <p><b>Exhibits:</b></p> <p>Cattle - Swine</p> <p>Poultry - Produce</p> <p>Automobiles</p> <p>Many Others</p> <p>Pony Pulls</p> <p>Tractor Pulls</p> <p>Prizes</p>
---	---	---

**SEE THE NEW LOOK FOR 1960... GROUNDS ARE BLACKTOPPED ALL WAY AROUND**

**ALL NEW PLUMBING AND REST ROOMS... DAILY SANITARY SERVICE**

**JUST YOU COME AND SEE THE ALL NEW 1960 JACKSON FAIR**



**NEW CHURCH BUILDING**—The Rev. and Mrs. Harvey Meppelink are shown in the above photo near the entrance to the new, modern style brick veneer church building for the congregation of the Chelsea Assembly of God. The Rev. Meppelink is holding the cross which is to be mounted on the outside wall of the church building. The Rev. Meppelink conducted the first service in the new church Aug. 14 and the occasion was also his farewell service as pastor of the church he organized here six years ago. He and his family were to leave yesterday for Springfield, Mo., where he has accepted a position as minister of youth and music at Calvary Temple, Assemblies of God. The Chelsea church, located on Old U.S. 12, just east of South Main St., has been constructed by volunteer labor with the exception of the block and brick laying and the plumbing. It is completely

fireproof. Volunteers are concentrating on finishing the exterior of the church building before cold weather. The interior will then be completed. The present building is 32x66 feet with an annex 10x24 feet in size serving as an entry to both the ground and first floors. It is the first unit of the church building. Plans call for a future second unit 35x60 feet to be added at the front. Sunday school attendance now averages 75 as compared with the nine who were present when the Rev. Meppelink held his first service in the chapel on the second floor of the store building at 120 South Main St. where the congregation has held its services the past six years. The Sunday school has a staff of 42 teachers. Sunday, Aug. 21, the Rev. James Sutton of Flushing, conducted services at the new church.

### Larry Schrader Enlists in Navy

Larry Schrader, a 1960 graduate of Chelsea High school, has enlisted in the U.S. Navy and will leave Aug. 31 to begin recruit training at Great Lakes Naval Training Station.

His enlistment is under the minority years program with discharge scheduled when he reaches his 21st birthday.

He is a son of Mr. and Mrs. Walter Schrader, Jr., of 143 Cavanaugh Lake.

Mrs. Frank Dow of Highland Park, a Chelsea resident some years ago, called Thursday afternoon at the home of Mrs. Dorothy Hart.

**We never get our signals crossed...**

**No confused moments here!**

**We get your instructions right the FIRST time... then hop to your job.**

If this is the kind of prompt, efficient service you're looking for... you're the kind of customer we're looking for.

**PURE OIL PRODUCTS**

**HANKERD'S SERVICE**

TIRES - BATTERIES - TUNE-UPS - BRAKE SERVICE

PHONE GR 5-7411 CHELSEA, MICH.

**Remember When Crabgrass Was A Problem?**



**You get the hot dogs, I'll finish off the crabgrass.**

All it takes is CLOUT and an accurate Scotts Spread-er. CLOUT destroys even the big, tough crabgrass plants. Simply fill the Spreader, set the dial to 7, and walk the lawn. Takes only 30 minutes, about as long as a round trip to the supermarket.

More and more folks are coming to us for advice on improving their lawns through an easy-to-follow Scotts Program. Come in anytime. We'll be glad to prescribe the correct Program for your lawn.

**Save \$5.00! Scotts Spreader (16.95) plus Clout (6.95) together only 18.90**

**Scotts**

**CHELSEA HARDWARE**

110 South Main Street Phone GR 9-6311











# CHELSEA COMMUNITY FAIR

## To Be Held at the Chelsea Fairgrounds

### September 7-8-9-10, 1960

FAIR GATES OPEN AT 9:00 A.M. EACH DAY

ADMISSION: 25c PARKING ON FAIRGROUNDS: 25c

Children 12 Years and Under Will Be Admitted Free.

Prizes • Exhibits • Horse Show • Tractor Pulling Contests • Entertainment • Carnival

**OFFICERS**

President: Thomas Bust  
Vice-President: Jack Merkel  
Vice-President: Charles Lane  
Secretary: Wallace Wood  
Treasurer: H. T. Moore

**DIRECTORS**

Reuben Lesser, Jr., Walter Loeffler, Wm. Van Riper, M. J. Anderson, Dorr Whitaker, Anton Nielson, Erwin Wenk, Robert Kuschmaul

**BUILDING COMMITTEE**

Paul Mann, Paul Schable, Alfred Mayer, Dorr Whitaker, John Brooks, Carl Heller

**COMMITTEE CHAIRMEN**

Publicity: Robert Daniels  
Entertainment: Vince Burg II  
Children's Day: M. J. Anderson  
Commercial Exhibits: Jack Merkel  
Agriculture Exhibits: Steve Hayden  
Decorations & Parade: George Atkinson  
Flowers: Mr. and Mrs. Clarence Fleming  
Home Economics: Helen Wolfgang and Wanda Heydlauff  
Hobbies: Mrs. Robert Kuschmaul  
Carnival: Carl Mayer-Gooding Amusement Co.  
Electricity: Ray Stewart  
Antique Cars: Ted Baimer  
Livestock Barns: Robert Kuschmaul  
Beef Cattle: Calvin Clark  
Dairy Cattle: Wm. Van Riper  
Sheep: Keith Bradbury  
Horse: Ralph McCalla  
Poultry & Rabbits: George Brettschneider  
Horses: Herman Koenn  
Farm Machinery Exhibit: John Brooks and Erwin Wenk  
Fruits: D. A. Riker and A. J. Plemeier  
Vegetables: Steve Hayden  
Finance: Leo Bishop  
Tractor Pulling: Dorr Whitaker  
Dining Room: Mrs. Geo. Brettschneider and Mrs. Thelma Franklin  
Banks: Walt Schrader  
Steer Committee: Al Mayer  
Parking: Chelsea Fire Dept.  
Gates & Tickets: Chelsea Fire Dept.

**GENERAL RULES AND REGULATIONS**

ALL EXHIBITS ARE OPEN TO EVERYONE.

ALL ENTRIES must be made by or owned by the exhibitor. (The committee reserves the right to refuse any entry not considered suitable. All entry forms must be turned in by Saturday, Sept. 3. Entry forms to be filed with Division Chairmen.)

EXHIBITS must be on the Fair Grounds by 12:00 noon Wednesday, Sept. 7, except baked goods which must be in place by 8:30 a.m., Thursday, Sept. 8.

JUDGING OF ENTRIES to start at 10 a.m., Thursday, Sept. 8.

REMOVAL OF ENTRIES—Removal of entries from exhibits will not be permitted until 9 p.m., Saturday, Sept. 10.

NO PREMIUMS will be paid on breeds or articles not listed.

ALL PREMIUMS shall be called for at the office of the Secretary starting Friday A.M., Sept. 9.

ALL PREMIUMS not called for by Nov. 1, 1960 shall be forfeited.

EXHIBITORS assume all risk in exhibiting livestock and other products.

## PREMIUM LIST

### AGRICULTURAL EXHIBITS

Supervisor—Steve Hayden

Exhibitor must furnish own containers for small seeds.

Corn samples consist of 10 ears.

Include 32 in peck of samples of potatoes.

Class	1st	2nd	3rd
1 Corn—Yellow Dent	\$1.00	.75	.50
2 Corn—Any other Dent (white, red)	1.00	.75	.50
3 Corn—Hybrid	1.00	.75	.50
(a) Phister	1.00	.75	.50
(b) DeKalb	1.00	.75	.50
(c) King's Cross	1.00	.75	.50
(d) Pioneer	1.00	.75	.50
(e) Funk's	1.00	.75	.50
(f) Any other Hybrid	1.00	.75	.50
4 Corn Display—Any varieties, colors or quantities	2.00	1.00	.75
5 Popcorn Display	1.00	.75	.50
6 (a) Oats, 1 peck	1.00	.75	.50
(b) Wheat, 1 peck	1.00	.75	.50
(c) Barley, 1 peck	1.00	.75	.50
(d) Rye, 1 peck	1.00	.75	.50
7 Bean Display	1.00	.75	.50
8 Legume Seed Display	1.00	.75	.50
9 Legume Display—in bundles	1.00	.75	.50
10 Grain Display—in straw and stalk	1.00	.75	.50
11 Grass Display—in bundles	1.00	.75	.50
12 Potatoes—Late, peck	1.00	.75	.50
13 Potatoes—Early, peck	1.00	.75	.50
14 Potatoes—Early, plate of five	.75	.50	.35
15 Potatoes—Early, plate of five	.75	.50	.35
16 Potato Display—any kind	2.00	1.00	.75
17 Buckwheat—1 quart	.50	.35	.25
18 Soybeans—1 quart	.50	.35	.25

Supervisor—D. A. Riker, A. J. Plemeier

Class	1st	2nd	3rd
1 Apple Display	2.00	1.00	.75
2 Peach Display	1.50	1.00	.75
3 Grape Display	1.50	1.00	.75
4 Pear Display	1.50	1.00	.75
5 Quince Display	.75	.50	.35
6 Variety of Fruits	2.00	1.00	.75
7 Plate of 5 apples (each variety)	.60	.35	.25

(1) Northern Spy; (2) Baldwin; (3) R. I. Greening; (4) N. W. Greening; (5) King; (6) Shows; (7) Grimes Golden; (8) Delicious; (9) Jonathan; (10) King; (11) Wagners; (12) Wealthy; (13) Duchess; (14) McIntosh; (15) Wolf River; (16) Winter Banana; (17) Cortland; (18) 20-oz. Pigeon; (19) Golden Delicious; (20) Crabapples (12 on plate); (21) Any other variety.

Supervisor—Steve Hayden

Displays may include any varieties as well as charts, models or other materials.

Class	1st	2nd	3rd
1 Display of Vegetables	2.00	1.00	.75
2 Cabbage—Any varieties	1.00	.75	.50
3 Tomatoes—Any varieties	1.00	.75	.50
4 Pumpkins	1.00	.75	.50
5 Squash	1.00	.75	.50
6 Watermelon	1.00	.75	.50
7 Muskmelon	1.00	.75	.50
8 Onions	.75	.50	.35
9 Peppers	.75	.50	.35
10 Cucumbers	.75	.50	.35
11 Gourds	.75	.50	.35
12 Carrots	.75	.50	.35

Supervisor—Steve Hayden

Class	1st	2nd	3rd
1 Egg Display	1.00	.75	.50
2 Walnuts, Hickory Nuts, Butternuts, etc.	.75	.50	.35
3 Largest Squash	.75	.50	.35
4 Largest Pumpkin	.75	.50	.35
5 Largest Watermelon	.75	.50	.35
6 Most Unusual Display	1.00	.75	.50
7 Farm Produce Exhibits (by Grange and other farm groups)	8.00	5.00	3.00
8 Sunflower Display	.75	.50	.35

**HEALTH REQUIREMENTS FOR LIVESTOCK EXHIBITED IN MICHIGAN—YEAR 1960**

**GENERAL**

Requirements provided in Michigan Department of Agriculture Regulations No. 116 and 117.

1. Livestock affected with a communicable disease must not be exhibited at nor brought to fair.

2. All exhibitors must furnish their own feed buckets, water buckets, and other equipment. Common water tanks are not permitted.

**CATTLE**

Requirements provided in Michigan Department of Agriculture Regulations No. 117 and 126 and Act No. 181 of the Public Acts of 1919, as amended:

All cattle for exhibition must be free from infectious and contagious diseases.

A. Cattle from Michigan:

1. Tuberculin test not required unless from herd under quarantine for tuberculous.

2. Passed blood test for Brucellosis (Bang's disease) from official laboratory required as follows:

(a) Male or female calf over twelve months of age (except as provided in paragraph 3 below) must be accompanied by official passed blood test chart showing blood test made within 30 days of exhibition; OR

(b) Evidence of origin from fully accredited (Bang's disease-free) herd; OR

(c) Evidence of origin from herd in process of accreditation which has had two clean herd tests within one year.

3. Vaccinated young stock exempt from blood test requirements for one year after vaccination if all the following requirements are met:

(a) Vaccinated with an approved Brucella Vaccine between the ages of 4 and 8 months;

(b) Vaccinated by a licensed, accredited veterinarian;

(c) Report of vaccination on record with Michigan Department of Agriculture;

(d) Copy of official vaccination record to accompany exhibited animal.

4. No blood test requirement on steers.

5. All cattle must have official health certificates approved by state officials.

**HORSES**

Requirements provided in Michigan Department of Agriculture Regulation No. 117:

All horses for exhibition must be free from infectious and contagious diseases.

**SHEEP**

Requirements provided in Michigan Department of Agriculture Regulation No. 117:

All sheep for exhibition must be free from infectious and contagious diseases.

**SWINE**

Requirements provided in Michigan Department of Agriculture Regulations No. 116 and 117:

All swine for exhibition must be free from infectious and contagious diseases.

**DIVISION E—LIVESTOCK**

Each exhibitor limited to one entry in each section.

Judging begins at 10:00 a.m. Thursday, Sept. 8.

Champion ribbons will be awarded deserving animals.

Care must be taken for feed, bedding and watering.

All animals must be free from infectious and contagious diseases.

**DAIRY CATTLE**

Supervisor—Bill VanRiper

**CLASS 1—BOLSTEIN DAIRY CATTLE (Purebred or Grade):**

Sec.	1st	2nd	3rd
1 Mature Cow, born before 7-1-57	\$7.50	\$6.00	\$4.50
2 Two-year-old Heifer, born before 7-1-58 and after 7-1-57	6.00	4.50	3.00
3 Senior Yearling Heifer, born 7-1-58 to 1-1-59	6.00	4.50	3.00
4 Junior Yearling Heifer born 1-1-59	6.00	4.50	3.00
5 Senior Calf, born 7-1-59 to 1-1-60	4.50	3.00	1.50
6 Junior Calf, born after 1-1-60	4.50	3.00	1.50

**CLASS 2—JERSEY DAIRY CATTLE (Same as Class 1)**

**CLASS 3—GUERNSEY DAIRY CATTLE (Same as Class 1)**

**CLASS 4—MILKING SHORTHORN DAIRY CATTLE (Same as Class 1)**

**CLASS 5—AYRSHIRE DAIRY CATTLE (Same as Class 1)**

**CLASS 6—BROWN SWISS (Same as Class 1)**

**CLASS 7—BEEF CATTLE**

Supervisor—Calvin Clark

Sec.	1st	2nd	3rd
1 Beef Calf, any breed, 6 months or under	\$6.00	\$4.50	\$3.00
2 Beef Heifer, any breed, 6 months or over	6.00	4.50	3.00
3 Beef Cow, any breed, 2 years or over	6.00	4.50	3.00
4 Hereford Steer	6.00	4.50	3.00
5 Angus Steer	6.00	4.50	3.00
6 Short-horn Steer	6.00	4.50	3.00

(\$1.00 entry fee for cattle to be sold at auction.)

**CLASS 8—HOGS**

Supervisor—Ralph McCalla

Sec.	1st	2nd	3rd
1 Boar, any breed, 6 months and over	\$4.50	\$3.00	\$1.50
2 Boar, any breed, 6 months and under	4.50	3.00	1.50
3 Grand Champion Boar	4.50	3.00	1.50
4 Sow, any breed, 1 yr. and over	4.50	3.00	1.50
5 Gilt, any breed, 6 mo. to 1 yr.	4.50	3.00	1.50
6 Gilt, any breed, 3 mo. to 6 mo.	4.50	3.00	1.50
7 Any breed, 3 months and under	4.50	3.00	1.50
8 Pen of 3 gilts, 6 mo. to 1 yr.	7.50	4.50	3.00
9 Pen of 3 gilts, 3 mo. and under	7.50	4.50	3.00
10 Grand Champion Sow	4.50	3.00	1.50
11 Fat Barrow, any breed	4.50	3.00	1.50
12 Grand Champion Barrow	4.50	3.00	1.50
13 Fat Hogs, pen of 3	7.50	4.50	3.00

Hogs must be vaccinated before exhibiting.

(50¢ entry fee for pen of hogs to be sold at auction.)

**CLASS 9—SHEEP**

Supervisor—Keith Bradbury

Sec.	1st	2nd	3rd
1 Ewe, lamb	\$3.00	\$1.50	.75
2 Ram, lamb	3.00	1.50	.75
3 Yearling ewe	3.00	1.50	.75
4 Aged ewe	3.00	1.50	.75
5 Yearling or aged ram	3.00	1.50	.75
6 Ewe, lamb	\$3.00	\$1.50	.75
7 Ram, lamb	3.00	1.50	.75
8 Yearling ewe	3.00	1.50	.75
9 Aged ewe	3.00	1.50	.75
10 Yearling or aged ram	3.00	1.50	.75
11 Ewe, lamb	\$3.00	\$1.50	.75
12 Ram, lamb	3.00	1.50	.75
13 Yearling ewe	3.00	1.50	.75
14 Aged ewe	3.00	1.50	.75
15 Yearling and aged ram	3.00	1.50	.75
16 Pen of 3 of any breed	\$4.50	\$3.00	\$1.50
17 Single fat lamb	3.00	1.50	.75
18 Ram, medium wool fleece	3.00	1.50	.75
19 Ewe, medium wool fleece	3.00	1.50	.75
20 Ram, fine wool fleece	3.00	1.50	.75
21 Ewe, fine wool fleece	3.00	1.50	.75
22 Ram, long wool fleece	3.00	1.50	.75
23 Ewe, long wool fleece	3.00	1.50	.75

(\$3.00 entry fee for pen of sheep to be sold at auction.)

Sec.	1st	2nd	3rd
6 (a) Three-Year-Old and over, under saddle (Western). Children up to 15	8.00	4.50	3.00
6 (b) Horsemanship Class, 15 years and under	6.00	4.50	3.00
6 (c) Horsemanship Class, 16 years and over	6.00	4.50	3.00
6 (d) Same as (a) for age group 16 years and over	6.00	4.50	3.00

**CLASS 10B—PONIES**

Sec.	1st	2nd	3rd
7 Under saddle	\$4.50	\$3.00	\$1.50
8 Pony Colts, under 2 years, halter	4.50	3.00	1.50

**CLASS 11—POULTRY**

Superintendent—George Brettschneider

DEPARTMENT OF AGRICULTURE REGULATION NO. 133

Regulation Relating To The Public Exhibition of Poultry

By virtue of the authority provided by Act 181, Public Acts of 1919, as amended, the following rules and regulations are hereby established:

1. Feed and water containers provided for exhibition coops shall be new and properly cleaned.

2. Feed or water containers from which birds have eaten or drunk must be refilled so as not to contaminate the common supply of feed or water. Feed or water containers may not be removed from exhibition coops except for the purpose of cleaning.

3. Exhibition coops must be thoroughly cleaned and disinfected, both prior to and following each exhibition.

4. Exhibition coops must be so constructed and placed as to provide adequate light for proper inspection of poultry or evidence of transmissible diseases.

5. Litter for exhibition coops must be of clean material and renewed daily or oftener as needed.

6. Shipping crates used in shipment of birds by common carrier may not be used as exhibition coops. Shipping crates shall be cleaned and disinfected after birds have been removed for exhibition and before being used again.

Sec.	1st	2nd	3rd	4th
1 Leghorn (white), 2 per pen	\$1.50	\$1.10	.75	.40
2 Any other light breed, 2 per pen	1.50	1.10	.75	.40
3 White Rocks, 2 per pen	1.50	1.10	.75	.40
4 Barred Rocks, 2 per pen	1.50	1.10	.75	.40
5 Any other heavy breed, 2 per pen	1.50	1.10	.75	.40
6 Ducks, any breed, 2 per pen	1.50	1.10	.75	.40
7 Geese, any breed, 2 per pen	1.50	1.10	.75	.40
8 Turkeys, any breed, 2 per pen	1.50	1.10	.75	.40
9 Bantams, old pair, any breed	1.10	.75	.40	
10 Bantams, young pair, any breed	1.10	.75	.40	

**CLASS 12—RABBITS**

Superintendent—George Brettschneider

Latest A.R.B.A. Rules to govern this show.

Breeds maturing over 10 lbs.	1st	2nd	3rd
Senior Buck	\$1.50	\$1.10	.75
Senior Doe	1.50	1.10	.75
Intermediate Buck	1.50	1.10	.75
Intermediate Doe	1.50	1.10	.75
Junior Buck	1.50	1.10	.75
Junior Doe	1.50	1.10	.75
Breeds maturing under 10 lbs.	1st	2nd	3rd
Senior Buck	\$1.50	\$1.10	.75
Senior Doe	1.50	1.10	.75
Junior Buck	1.50	1.10	.75
Junior Doe	1.50	1.10	.75

**HOME ECONOMICS**

Superintendent—Helen Wolfgang and Wanda Heydlauff

**CANNING—1 Quart or 2 Pints**

FRUITS	1st	2nd	3rd
Apple Sauce	\$1.00	.60	.40
Cherries (sweet)	1.00	.60	.40
Cherries (sour)	1.00	.60	.40
Peaches	1.00	.60	.40
Pears	1.00	.60	.40
Plums	1.00	.60	.40
Raspberries	1.00	.60	.40
Huckleberries	1.00	.60	.40
MISCELLANEOUS VEGETABLES	1st	2nd	3rd
Beans, Lima	\$1.00	.60	.40
Beans, Green String	1.00	.60	.40
Beans, Yellow String	1.00	.60	.40
Beets	1.00	.60	.40
Corn	1.00	.60	.40
Peas	1.00	.60	.40
Tomatoes	1.00	.60	.40
JUICES	1st	2nd	3rd
Tomato Juice	1.00	.60	.40
Grape Juice	1.00	.60	.40
Other Juices	1.00	.60	.40

**MISCELLANEOUS**

Beets	1.00	.60	.40
Corn	1.00	.60	.40
Peas	1.00	.60	.40
Tomatoes	1.00	.60	.40
<b>JUICES</b>			
	1st	2nd	3rd
Tomato Juice	1.00	.60	.40
Grape Juice	1.00	.60	.40



## FURNACE DUST FILTERS

20x20x1 16x20x1  
20x25x1 16x25x1

80¢ each

## W. E. FARRELL SHEET METAL

INDUSTRIAL AND GENERAL SHEET METAL WORK

115 WEST MIDDLE STREET—CHELSEA  
PHONE Greenwood 9-2011

Read what the experts say:

**CAR LIFE**  
THE COMPLETE AUTOMOTIVE MAGAZINE  
CAR LIFE Magazine says:

**OLDS IS THE  
BEST BUY**  
IN THE MEDIUM PRICE CLASS!!

Get your free copy of the article from Car Life Magazine... at your OLDS Dealer's Now!

Olds Motor Sales, Inc., 208 Railroad Street

.CHELSEA K. OF C.

## CHICKEN BARBECUE SUNDAY, AUG. 28

ST. MARY'S SCHOOL

Serving 12 to 5 p.m. - Rain or Shine

Adults: \$1.50 Children (under 12): 75¢

Tickets Available at

Merkel's Hardware - Hanker's Service

or from any K. of C. Member

## Patricia Langowski Becomes Bride of Gladwin Emmons

Mr. and Mrs. John Langowski are announcing the marriage of their daughter, Patricia, to Gladwin Emmons, son of Charles Emmons of Fitchburg, and the late Mrs. Emmons.

Stanley Hudgins, minister of the Chelsea Church of Christ, officiated at the ceremony which took place Saturday afternoon at the home of the bride's parents, 238 Buchanan St.

For her wedding the bride wore a white street-length dress, a white hat and other accessories in white. Her corsage was of red roses.

Nancy Boring of Stockbridge, served as maid of honor, wearing for the occasion a blue street-length dress and a corsage of pink carnations.

Larry Wild of Fitchburg assisted the bridegroom as best man. Following the ceremony, a reception was held at the Church of Christ.

Refreshments were served from tables centered with bouquets which were gifts from Mrs. Dewey Joseph.

## Proctor Family Reunion Held at Independence Lake

Sixty members of the Harvey Proctor family and 18 guests attended the annual reunion of the family Sunday. It had been intended to hold the reunion at the Perry Losey home at Independence Lake, north of Dexter, but because of inclement weather, the gathering was held at Lima Center Community Hall.

Present for the annual occasion were relatives from Manchester, Chelsea, Dexter, Grass Lake, Tecumseh, Clinton, Livonia, Trenton, Ypsilanti, Ann Arbor and Pinckney.

Oldest members present were Perry Losey of Independence Lake, and Mrs. Harvey Proctor of Manchester, while five-month-old Billy Pidd, son of Mr. and Mrs. Ervin Pidd of Dexter, was the youngest child present.

The Pidds were hosts for Sunday's reunion. Officers elected to arrange for the 1981 reunion were Mr. and Mrs. Russell Proctor of Livonia, president and secretary-treasurer, respectively; Mrs. Charles Dinus of Tecumseh; Historian, and David and Diane Proctor of Tecumseh, entertainment chairmen.

John G. Klink, Douglas Schneider and father, Lewis Schneider, spent five days of the past week on a fishing trip in Ironbridge, Canada.

## Family Gathering Held Sunday at Charles Curtis Home

A family gathering was held Sunday at the home of Mr. and Mrs. Charles Curtis of Sager Rd., as a belated celebration of July birthdays of seven members of the family.

Those honored included Ruth Ann and Monica Curtis of Manchester, Eugene and Joan Wahl, Mrs. Alton Curtis and son, Richard, of Grass Lake, and Amos Curtis who was observing his 70th birthday.

A co-operative dinner was served, those present being the Charles Curtis family, Mrs. Helen Valant, Harvey Pout, of Saline; Mr. and Mrs. Norman Brautigam and family, of Jackson, Mr. and Mrs. Robert Curtis and family, and Jane Snyder of Manchester; Mr. and Mrs. Harold Wahl and family; Mr. and Mrs. Alton Curtis and son, William and David.

## Three VFW Auxiliary Members Attending National Convention

It was reported at a regular meeting Monday evening of the Veterans of Foreign Wars Ladies Auxiliary to Post 4076, that three of its members were in Detroit that day attending the national VFW convention.

Mrs. Geraldine Klink attended as a visitor and Mrs. Thelma Franklin, hospital chairman of the Chelsea Auxiliary and Mrs. Iza Carty, who were hostesses in connection with the national visitation to VA hospitals of Dearborn and Ann Arbor. Buses brought the hospital visitors from the VFW convention in Detroit.

The district had provided portfolios of stationery supplies which were distributed to the patients. Mrs. Franklin was at the Dearborn hospital and Mrs. Carty at the Ann Arbor hospital.

A guest at the meeting of the Chelsea Auxiliary Monday evening was Mrs. Lucy Goodman who is a member of the Hoffman VFW Auxiliary of Detroit.

It was announced at Monday's meeting that all quotas of the Auxiliary National Home, Child Welfare, etc.—have been paid for the current year.

Monday's meeting was held at the Knights of Columbus Hall.

Guests of Mr. and Mrs. Donald Proctor the past week were Mr. and Mrs. Walter Hasenfus and family of Bingham, Me. They were here for the wedding of her sister, Diane Erickson. Week-end guests also included uncles and aunts of Miss Erickson.

## Chelsea Resident's Daughter Married In Ann Arbor

Diane Erickson of White Plains, N. Y., formerly of Ann Arbor, and Wilbert Lindvall of Chicago, were married Saturday morning in St. Thomas Catholic church, Ann Arbor. Officiating at the 11 o'clock service was the Rev. Fr. Sabourin.

The bride's short-sleeved gown was of silk organza with a scoop neckline trimmed with pearls. The bouffant skirt ended in a sweeping train. The ballerina veil was held by a pearl crown. She carried a bouquet of white carnations centered with a white orchid.

The bride is a daughter of Mrs. Delphine Erickson of Chelsea and L. B. Erickson of Chicago, Ill.

The bridegroom's parents are Wilbert Lindvall, Sr., and Mrs. Jean Ross, both of Chicago.

The mother of honor was Mrs. Walter Hasenfus of Bingham, Me., sister of the bride. Her gown was in princess style, floor length, in mint green, with a matching headband. She carried white carnations and pink roses.

Best man was Walter Hasenfus, brother-in-law of the bride. Donald Proctor, also a brother-in-law of the bride, served as an usher.

A noon luncheon was served at the American Legion home at Canandaigua Lake and was followed by a reception.

After the reception Mr. and Mrs. Lindvall left for California where they will make their home.

Out of town guests for the wedding came from Wisconsin, Minnesota, Illinois, New York, Maine, and several points in Michigan.

## Farewell-Party Honors Departing Minister

A farewell fellowship gathering in honor of the Rev. and Mrs. Harvey Meppelink was held Friday evening at the home of Mr. and Mrs. Earl Willis, Jr., on North St. Assisting hostesses were Mrs. Albert Wiscup and Miss Joy Lovely.

The Meppelinks are moving this week to Springfield, Mo., where the Rev. Meppelink will be minister of youth and music at Calvary Temple, Assemblies of God. The Meppelinks have lived in Chelsea the past six years while he served as pastor of the Chelsea Assembly of God.

Jane Arnett and Albert Wiscup were in charge of games played during the evening. Refreshments were served by the hostesses and the Meppelinks were presented with a number of gifts.

## NORTH LAKE EXTENSION

Nineteen ladies and nine children enjoyed a picnic Wednesday afternoon, Aug. 20 on the beautiful lawn at the attractive home of Mrs. Chris Fitzsimmons near North Lake.

The occasion was a meeting of the North Lake Extension Club, at which time ideas were presented for the group's exhibit at the annual Christmas workshop at the court house in Ann Arbor.

The next meeting place will be announced later.

**Joanna  
Western**

Window Shades

CUSTOM CUTTING

**MERKEL BROS.**

## + Services in Our Churches +

**FIRST METHODIST CHURCH**  
The Rev. S. D. Kinde, Pastor  
Sunday, Aug. 28—  
10:00 a.m.—Nursery, kindergarten, primary and junior Sunday school departments.  
10:00 a.m.—Worship service. Sermon by the pastor, the Rev. S. D. Kinde.

**NORTH LAKE METHODIST CHURCH**  
The Rev. Harry Fysher, Pastor  
Sunday, Aug. 28—  
9:30 a.m.—Worship service.  
10:30 a.m.—Sunday school.

**ST. PAUL'S EVANGELICAL AND REFORMED CHURCH**  
The Rev. Paul M. Schnake, Pastor  
Sunday, Aug. 28—  
8:15 a.m.—Early worship service.  
9:30 a.m.—Sunday school.  
10:45 a.m.—Regular worship service.

**CONGREGATIONAL CHURCH**  
The Rev. Philip Kasten, Pastor  
Sunday, Aug. 28—  
10:00 a.m.—Summer family service. Facilities for nursery and kindergarten.

**SALEM GROVE METHODIST CHURCH**  
US-12 at Notten Road  
The Rev. Harry Fysher, Pastor  
Sunday, Aug. 28—  
10:00 a.m.—Sunday school.  
11:15 a.m.—Worship service.

**BETHEL EVANGELICAL AND REFORMED CHURCH**  
(United Church of Christ)  
Freedom Township  
The Rev. T. W. Mayzel, Pastor  
Sunday, Aug. 28—  
10 a.m.—Worship service.  
11 a.m.—Sunday school.  
7 p.m.—Youth Fellowship hay ride.

The Aug. 30 meeting of the Adult Fellowship has been postponed until 7 p.m. Sunday, Sept. 4.

**NORTH SHARON COMMUNITY BIBLE CHURCH**  
Sylvan and Washburn Roads  
The Rev. Carmen Carpenter, Pastor  
Sunday, Aug. 28—  
10:00 a.m.—Sunday school.  
11:00 a.m.—Worship service.  
7:00 p.m.—Young people's meeting.

**CHELSEA BAPTIST CHURCH**  
Wilkinson Street  
The Rev. David A. Wood, Pastor  
Sunday, Aug. 28—  
10:00 a.m.—Sunday school.  
11:00 a.m.—Worship service.  
6:30 p.m.—Young people's service.

**CHURCH OF CHRIST**  
M-92, 1/2 Mile South of Old US-12  
Stanley Hudgins, Minister  
Sunday, Aug. 28—  
10:00 a.m.—Sunday school and Bible study.  
11:00 a.m.—Morning worship.  
6:00 p.m.—Evening worship service.

**GREGORY BAPTIST CHURCH**  
The Rev. W. T. Cochran, Pastor  
Sunday, Aug. 28—  
10:00 a.m.—Morning worship.  
11:15 a.m.—Sunday school.  
6:45 p.m.—Training Union.  
8:00 p.m.—Evening worship.

**NEEDLEWORK GUILD**  
Officers of the Chelsea Chapter of the Needlework Guild met Monday afternoon at McKune Memorial Library for a regular meeting and to make plans for the annual fall ingathering here. Mrs. Thomas Masterson, president of the chapter, presided.

It was announced that the ingathering will be held Thursday, Oct. 6, at the Congregational church with members of the Helping Hand Circle in charge of the ingathering tea.

Stressed at the meeting was the announcement that items especially desirable as donations are children's jeans, dresses, socks, shirts and underwear in sizes six to 14; also, warm caps and mittens.

The donations to the Needlework Guild are new items and most of the clothing is distributed here through the Chelsea Social Service.

Standard Want Ads Get Results!

**GULF GULFTANE**  
LP-GAS HEATERS  
Bottled Gas Service  
We Have a Large Stock of  
★ SPACE HEATERS  
★ FLOOR FURNACES  
★ IN-THE-WALL HEATERS  
★ WATER HEATERS  
★ RANGES  
★ DRYERS  
★ INCINERATORS

We install and service all types of gas equipment.

PHONE NO 5-6161  
**Gallup-Silkworth Co., Inc.**  
2141 So. State St. Ann Arbor

**ST. JOHN'S EVANGELICAL AND REFORMED CHURCH**  
(United Church of Christ)  
(Rogers Corners)  
The Rev. Donald H. Voss, Pastor  
Sunday, Aug. 28—  
9:30 a.m.—Sunday school.  
10:30 a.m.—Worship service.

**METHODIST HOME-CHAPEL**  
(Rogers Corners)  
The Rev. E. J. Welas, Pastor  
The Rev. G. P. Stanford, Chaplain  
Sunday, Aug. 28—  
8:00 a.m.—Worship service.

**ZION LUTHERAN CHURCH**  
(Rogers Corners)  
The Rev. C. J. Renner, Pastor  
Sunday, Aug. 28—  
9:00 a.m.—Sunday school.  
10:15 a.m.—Worship service.  
Sermon topic: "The Hardest Lesson of All."

Monday, Aug. 29—  
7:40 p.m.—Junior choir rehearsal.  
8:00 p.m.—Senior choir rehearsal.

Wednesday, Aug. 31—  
Women of Zion meetings.  
2:00 p.m.—Afternoon Circle.  
7:45 p.m.—Evening Circle.  
Thursday Sept. 1—  
8:30 p.m.—Brotherhood meeting.

**ST. THOMAS EVANGELICAL LUTHERAN**  
Freedom Township  
Ellsworth and Haab Road.  
The Rev. Richard W. Bierlein  
Friday, Aug. 29—  
8:00 p.m.—Ladies Aid Society at the home of Mrs. Bernard Herrat.

Sunday, Aug. 28—  
10:00 a.m.—Worship service.  
11:00 a.m.—Sunday school.

**UNADILLA PRESBYTERIAN CHURCH**  
The Rev. William Yauch, Pastor  
Sunday, Aug. 28—  
10 a.m.—Worship service.  
11 a.m.—Sunday school.

**WATERLOO VILLAGE CHURCH**  
(Evangelical United Brethren)  
The Rev. Wilbur Silvernail, Pastor  
Sunday, Aug. 28—  
10:00 a.m.—Sunday school.  
11:15 a.m.—Worship service.

**COLONIAL MANOR NURSING HOME**  
236 East Middle Street  
PHONE GR 9-1491  
Efficient Nursing Care  
Day and Night  
IN BEAUTIFUL CHELSEA

**ASSEMBLY OF GOD CHURCH**  
14900 Old US-12  
Sunday, Aug. 28—  
10:00 a.m.—Sunday school.  
11:00 a.m.—Morning worship.

**ST. BARNABAS' EPISCOPAL CHURCH**  
Old US-12, Community Fairgrounds  
The Rev. Allan W. Reed, Vicar  
Sunday, Aug. 28—  
9:30 a.m.—Morning Prayer, sermon and church school.

**ST. MARY'S CATHOLIC CHURCH**  
The Rev. Fr. Leo J. Smith, Pastor  
Sunday, Aug. 28—  
Masses at 7 a.m., 9 a.m., and 11 a.m.

**FIRST CHURCH OF CHRIST SCIENTIST**  
1883 Washtenaw Ave., Ann Arbor  
Sunday, Aug. 28—  
9:30 a.m.—Sunday school.  
11:00 a.m.—Morning service. Lesson-sermon: "Christ Jesus." Scriptural selections to include: "Now when the sun was setting, all they that had any sick with divers diseases brought them unto him; and he laid his hands on every one of them, and healed them." Luke 4:40.

**ST. JOHN'S EVANGELICAL AND REFORMED CHURCH**  
(United Church of Christ)  
(Francisco)  
The Rev. Donald H. Voss, Pastor  
Sunday, Aug. 28—  
9:45 a.m.—Sunday school.  
11:00 a.m.—Worship service.

**EYES EXAMINED  
GLASSES FITTED**  
Dr. K. W. LeHeup  
OPTOMETRIST  
1490 Sugar Loaf Lake  
on Waterloo Road  
BY APPOINTMENT ONLY  
GR 9-4743  
Prescriptions filled for factory safety glasses.

## THANK YOU...

We thank all our friends who contributed labor, food and money to help make our ice cream social a success. Especially we thank everyone who braved the rains to have dinner with us.

**ST. BARNABAS' EPISCOPAL CHURCH**

## FINAL WEEK!

**Berkshire  
stocking  
SALE**  
ends September 3!

It won't happen again for another year!

Buy sheer seamless and full-fashioned Berkshire stockings now—and save! Berkshire's sensational once-a-year sale ends next Saturday!

**HERE'S WHAT YOU SAVE!**

REG. 1.35...NOW 1.09...3 pairs 3.19  
REG. 1.50...NOW 1.19...3 pairs 3.49  
REG. 1.65...NOW 1.29...3 pairs 3.79

**Vogel's Store**

## LAST 3 DAYS TO SAVE

**STORE-WIDE FURNITURE SALE ENDS SAT.**  
**HUNDREDS OF FINE PIECES REDUCED**

**MERKEL BROS. BEAUTIFUL HOME FURNISHINGS**



## —NOTICE— WILL SPRAY for TB and BANGS

Will Also Spray Cattle for Grubs.

I have personally checked with Dr. Asa Winters, State Veterinarian.

**Be Sure You KNOW Your Sprayman**  
(approved with Carbola Certificate No. 481)

**WILL BE WORKING IN THIS AREA  
AUG. 1 THROUGH THE SUMMER**

ALL WORK GUARANTEED - 15 YEARS EXPERIENCE

**MARTIN COX**

Phone HI 11252 HUDSON, MICH.  
or Mail Card to Martin Cox, Hudson, Mich.

**Keep 'em Healthy!  
Keep 'em Growing!**

Give your livestock and poultry our vitamin-fortified feeds and supplements to make sure they get that "nutrition-plus" that protects health, promotes growth and pays off handsomely in plus profits to you.



**FARMERS' SUPPLY CO.**  
ANTON NIELSEN - SEEDS, FEEDS, FERTILIZER  
DAIRY AND POULTRY EQUIPMENT  
ACROSS FROM DEPOT - PHONE GR 5-5511 CHELSEA

## TRANSIT-MIX CONCRETE

Finest quality concrete made to your specifications in our new automatic plant and delivered to your job location.

A fleet of 6 modern transit-mix trucks assures you of prompt delivery anywhere in the area.

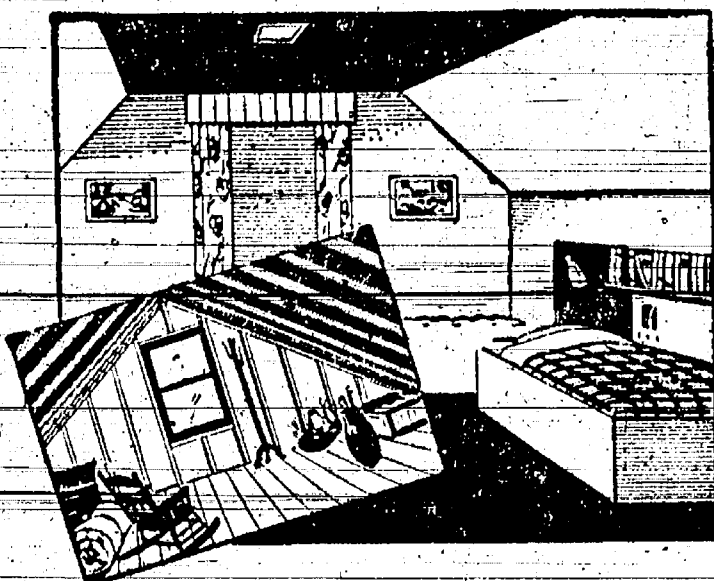
**PROMPT DELIVERY**

STONES: 1 1/2", 1", 3/4", 1/2", 3/8" - 2NS SAND

**KLUMPP BROS.  
GRAVEL CO.**

Phone Chelsea GR 9-2712

4950 Loveland Road Grass Lake, Mich.



## ADD AN EXTRA ROOM!

Let us show you how easy it is to turn that idle space in your attic (or basement) into an extra room for added comfort and for your guests to enjoy.

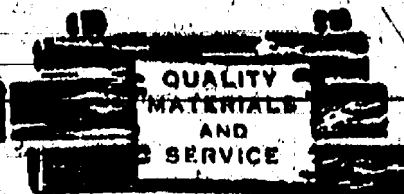
We have a service that will enable you to improve your home by completing your remodeling job now and financing it on a monthly payment plan.

**We Can Supply You With  
QUALITY BUILDING MATERIALS**  
and will be glad to furnish you an estimate of materials and cost needed to do the job.

Open - 7:30 a.m. to 5:30 p.m.

**Finkbeiner Lumber Co.**

Phone  
GR 9-3881



Just off  
S. Main St.  
On Old  
US-12

MARTIN STEINBACH, OWNER

## RURAL CORRESPONDENCE

Items of Interest About People We All Know, as Gathered by Correspondents

### NORTH FRANCISCO

Mr. and Mrs. Nelson Peterson, Mrs. Lena Hart, Mr. and Mrs. Clifford Peterson, Mr. and Mrs. Rudolph Rohde and sons, and Mrs. Will Barber were Osoego, Sunday and had a picnic with Mr. and Mrs. Paul Bronson.

Mr. and Mrs. Richard Vicary, son, Robert, and daughter, Linda, were Saturday evening visitors of Mr. and Mrs. Nelson Peterson.

Mr. and Mrs. Chester Notten were Sunday dinner guests of Mr. and Mrs. Lynn Dancer.

Mr. and Mrs. Henry Notten and family were week-end guests of her parents at Houghton Lake.

Mr. and Mrs. Chester Notten and granddaughter, Marty, spent Thursday with their son-in-law and daughter, Mr. and Mrs. Chester Davis at Angola, Ind. Dale and Debbie returned home after spending some time with their grandparents.

Mr. and Mrs. Erwin Kalmbach were Wednesday afternoon callers of Mr. and Mrs. Harold Wahl.

Mr. and Mrs. Roy Miller called on Mr. and Mrs. Emerson Lesser Tuesday evening.

Mr. and Mrs. Everett Musgrave and two grandsons, of New Brighton, Pa., spent from Thursday until Monday with his brother-in-law and sister, Mr. and Mrs. Roy Miller.

Mrs. Al Schweinfurth and Mrs. Oscar Kalmbach spent an afternoon last week with Mrs. E. T. Quatt.

Mrs. Emil Thomas of Ann Arbor spent Sunday with her mother.

Recent callers last week of Mrs. Carl Stasch were Mrs. Mary Clark, Miss Doris Foster and Mrs. Chester Arthur.

Mr. and Mrs. Glenn Rentschler, Mr. and Mrs. Dillman Wehl and daughter, Loretta, Mr. and Mrs. Jerry Herrick, Mr. and Mrs. Harley Loveland and Mrs. Leonard Loveland attended the 40th annual Loveland reunion at Ella Sharpe Park, Jackson, Sunday, with 50 in attendance.

Mr. and Mrs. Harley Loveland will be hosts next year.

Mrs. Lena Hart of Battle Creek spent from Tuesday until Monday with Mr. and Mrs. Nelson Peterson.

Mr. and Mrs. John Hartman attended the dedication service of the new organ recently installed at the St. John's church, Rogers Corners.

Mrs. Lena Hart is spending a few days with Mrs. Leonard Loveland.

### FOUR MILE LAKE

Mr. and Mrs. Glenn Rentschler of Waterloo were Monday evening visitors of Mr. and Mrs. Ezra Heininger.

Mr. and Mrs. William Weirich were Sunday visitors of the latter's mother, Mrs. Mary Reames. They also called on Mr. and Mrs. Roy Shellhart, all of Gregory.

Mr. and Mrs. Donald Wright and daughter, of Ypsilanti, were Sunday dinner guests of his parents, Mr. and Mrs. Burton Wright and family.

Mr. and Mrs. Frank Abdon of Chelsea and Mrs. Alvan Bisasser of Dexter were Sunday afternoon visitors there.

Mr. and Mrs. Alvin Brassow and family spent Sunday evening at the home of Mr. and Mrs. Raymond Brassow of Dexter. The occasion honored the birthday of Esther Brassow.

Mr. and Mrs. Ernest Eynon and daughter, of Bay City, Mrs. Helen Breining and Miss Eva Swick of Ann Arbor were Sunday dinner guests of Mr. and Mrs. William Snay.

Mr. and Mrs. Alvin Wahr and family were Tuesday evening dinner guests of her parents, Mr. and Mrs. Ezra Heininger. The occasion was in honor of the birthday of Mrs. Wahr.

Mr. and Mrs. David Fischer and family were Sunday visitors of his parents, Mr. and Mrs. Harvey

Fischer and son, Marvin. Mr. and Mrs. Jerry Kelly and family, of Wayne, were Saturday morning visitors there.

Mr. and Mrs. Allen Koorcher of Ann Arbor were Friday night callers of Mr. and Mrs. Henry Englehart and Mrs. Meta Luht.

Tuesday evening visitors were Walter Schaible and Miss Rose Haynes of Ann Arbor.

James Heydiauff was a Sunday guest of his brother and sister-in-law, Mr. and Mrs. Jerald Heydiauff and family.

### WATERLOO

Mrs. Lone Moeckel is spending a few days with her sister and brother-in-law, Mr. and Mrs. Walter Bohne of Francisco.

Mr. and Mrs. Richard Vicary and children, of Elkhart, Ind., spent Saturday with their parents and sister, the Walter Vicarys and Anna-belle Woolleys.

Mrs. Jessie Schulz visited her sister, Mrs. Dora Stoffer, in Stockbridge last week.

Mr. and Mrs. Tom Slater and daughter are now occupying the Annabelle Woolley home.

Mr. and Mrs. Gottlieb Rothman spent Tuesday with their daughter and family, the William Claydons in Pontiac. On Sunday they were dinner guests at the home of their daughter and family, Mr. and Mrs. Willard Ponto in Ann Arbor.

Mr. and Mrs. Gottlieb Rothman spent Tuesday with their daughter and family, the William Claydons in Pontiac. On Sunday they were dinner guests at the home of their daughter and family, Mr. and Mrs. Willard Ponto in Ann Arbor.

### SHARON TOWNSHIP

Mr. and Mrs. Milner Brown of Redford were Sunday guests of Mr. and Mrs. L. D. Sott. Martha Sott returned home with them to spend several days.

Mrs. John Hatcher and baby son, of San Mateo, Calif., were visitors one day last week of her grandmother, Mrs. John C. Leeman.

Mrs. John C. Leeman and her son and his wife, Mr. and Mrs. Sid Leeman of Manchester, were Saturday evening guests of Mr. and Mrs. Putnam Dorr, parents of Mrs. John Hatcher of San Mateo, Calif., who has been spending some time there with her baby son.

### SALEM GROVE

Randy and Julie Layher, of Ann Arbor, spent from Friday until Monday night at the home of their grandparents, Mr. and Mrs. Fred Layher.

Mr. and Mrs. Richard Layher and son, Richard, Jr., were Monday evening dinner guests of his parents, Mr. and Mrs. Fred Layher. Randy and Julie returned home with their parents.

Mr. and Mrs. Albert Schweinfurth and family attended the Cherry Hill Methodist church Sunday and were guests of the Rev. and Mrs.

Tailored Protection

of Auto-Owners' lights

the way to complete

insurance coverage for

you... and peace of mind.

Call us today.

Auto-Owners

INSURANCE COMPANY

**A. D. MAYER**

"Insurance for Every Need"

115 Park St. Chelsea, Mich.

Phone: Office GR 5-7131

Res. GR 5-4201

## SERVICE Is Our Business

One of the services we provide:

Stop Shipping Fever and Pneumonia

In Your New Lot of Cattle...

- ★ SULMET
- ★ PENICILLEN
- ★ COMBIOTIC

**BLAESS  
Elevator Co.**

Phone GR 9-6511



Chelsea, Mich.

### CAVANAUGH LAKE

Last week callers of Mr. and Mrs. Emerson Lesser were Mr. and Mrs. Eugene Stoeber of Ann Arbor. On Sunday Mr. and Mrs. Lesser were callers of their son and daughter-in-law, Mr. and Mrs. Melvin Lesser of Munith.

Week-end guests of Mrs. Esther Turnbull were Mr. and Mrs. Harold Geurel of Lantana, Fla.

### ROGERS CORNERS

The William Stark family were among those who attended the annual Practor family reunion, held Sunday at Lima Center Community Hall.

Lois Stark was in Lansing Tuesday and yesterday to take the required state board examination for beauticians.



In Greater Detroit—COMET outsells  
Rambler, Lark, Corvair, Valiant!

Now... Comet deals  
as hot as Comet sales

\$ **44** <sup>90</sup> <sub>a month</sub>

and a Comet sedan is yours!

Chances are good that your present car will more than cover the down payment. If it's an above-average trade-in, your payments can be even less each month. These terms may vary slightly according to the pricing policies of individual dealers.

**We have Comets available for immediate delivery—get yours today!**

**CHELSEA IMPLEMENT COMPANY, INC.**

3231 Manchester Road

Chelsea, Michigan